


SIDES	ANGLES OF DIRECTION	CO-ORDINATES		DIAGRAM NUMBER
		SYSTEM Y	METRES X	
AB	4209.49	71.11.20		APPROVED:  GOVERNMENT SURVEYOR DATE: 09/03/2021
BC	3329.43	159.12.10		
CD	830.60	243.31.20		
DE	30.48	333.31.20		
EF	75.18	243.31.20		
FG	30.48	153.31.20		
GH	2709.59	243.28.10		
HJ	624.02	354.44.20		
JK	804.67	264.44.20		
KA	2978.85	339.11.40		
River Data				
A-a	45.73	339.11.40		
E-e	39.53	339.12.10		

Areas
 Rect. = 1450.8525 Ha
 Curv. = - 10.9860 Ha
 Total Area = 1439.8665 Ha

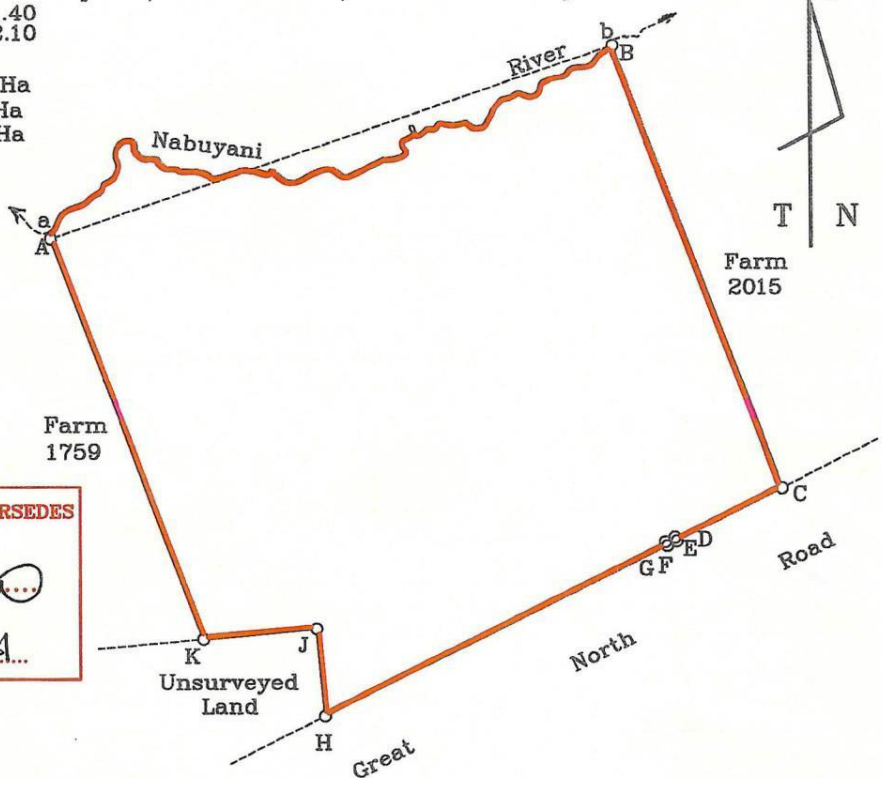
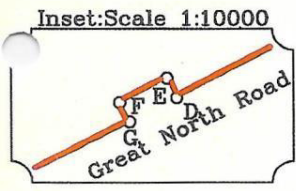


DIAGRAM No. SD_6428/2021 SUPERSEDES
 DIAGRAM No. 484/1954

 GOVERNMENT SURVEYOR
 DATE: 09/03/2021

SCALE 1: 50000
 mCON DESCRIPTION All are iron pegs in concrete

THE FIGURE A-a-Left Bank of Nabuyani River-b-B-C-D-E-F-G-H-J-K-A
 REPRESENTS 1439.8665 Hectares
 BEING Farm 1753 or IAND
 SITUATED IN THE Southern PROVINCE REPUBLIC OF ZAMBIA
 SURVEYED IN June, 1952

N.M. MacArthur
 LAND SURVEYOR

APPROVED IN
 SECTION
 OF LAND SURVEY