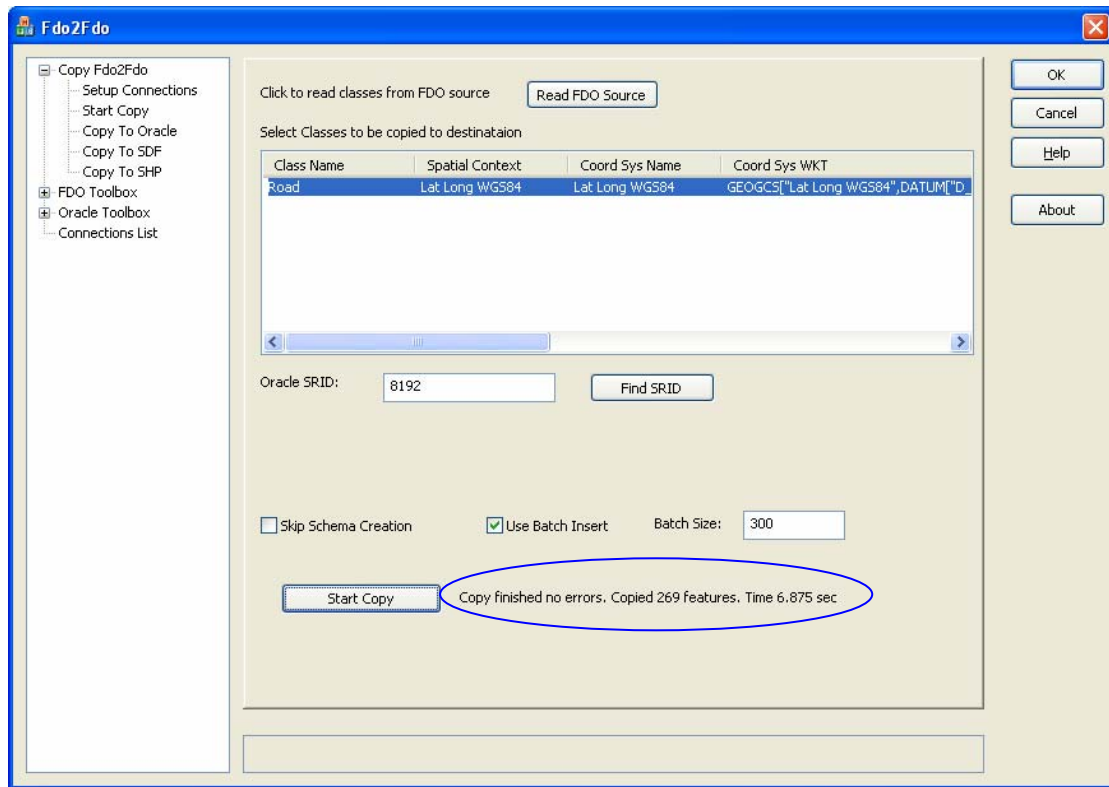


Oracle King Provider → 0.4.4.0

Step-1

Shapefile → Oracle10gR2 (Success)



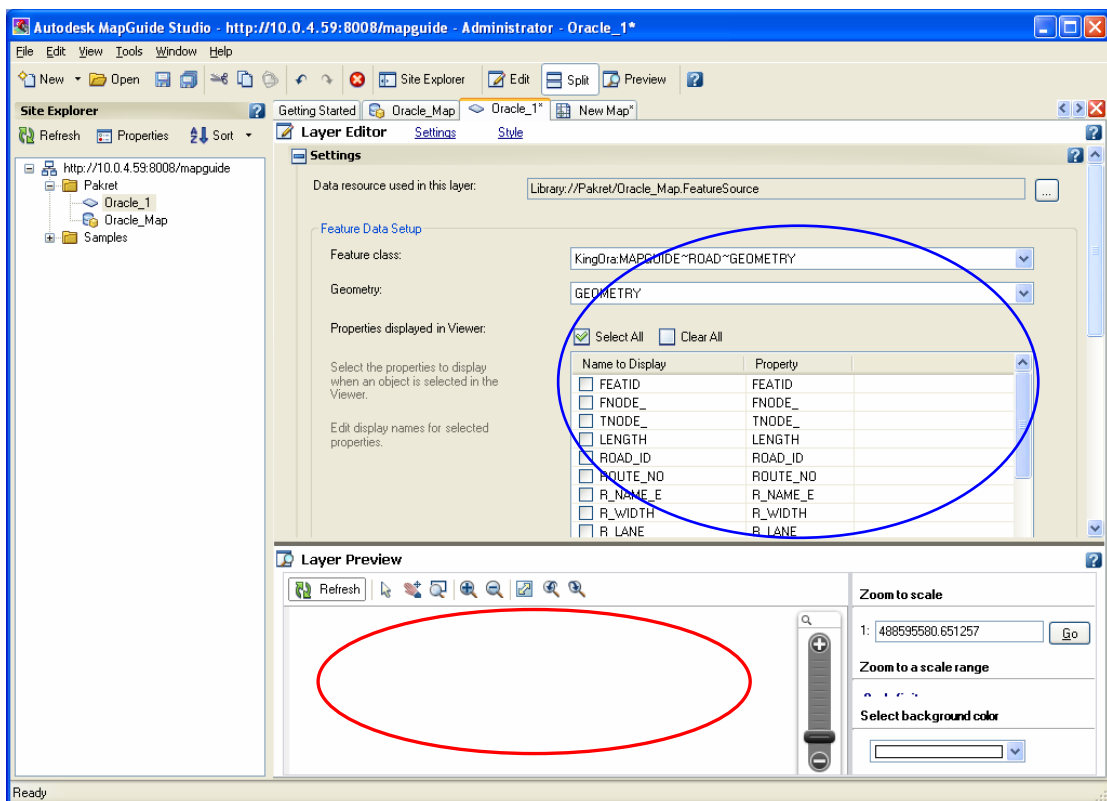
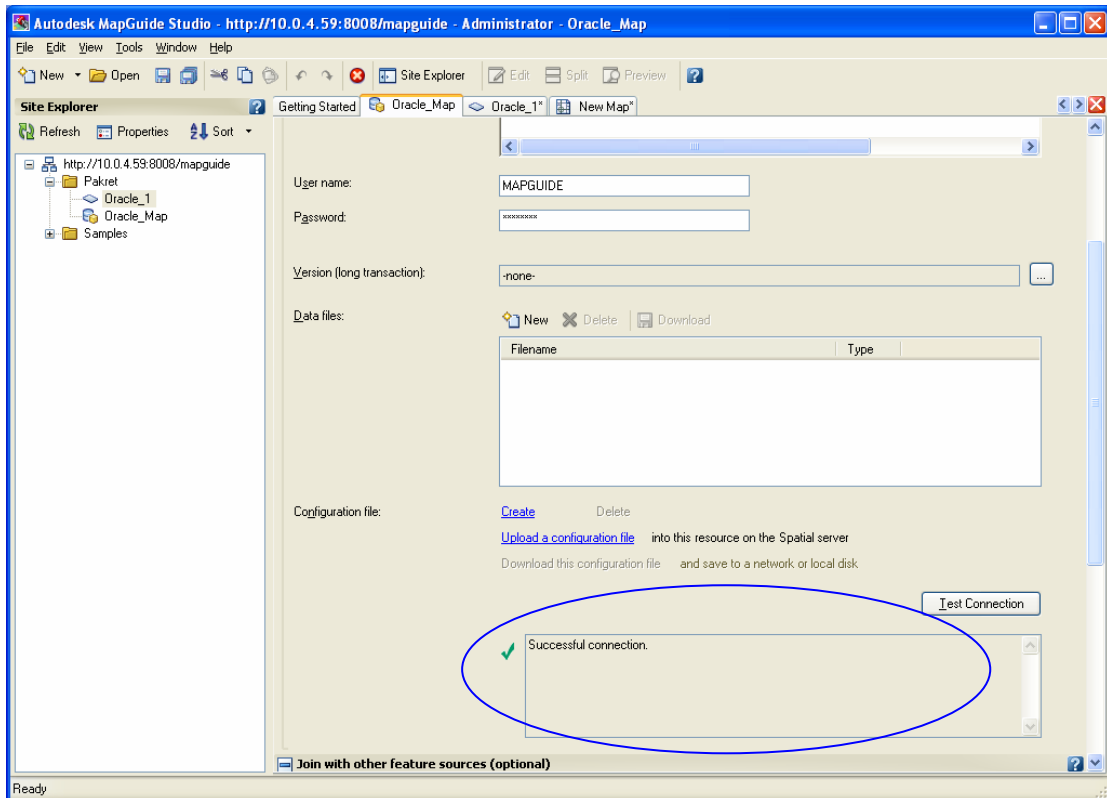
Projection Details

Road Shapefile →

```
GEOGCS["Lat Long  
WGS84",DATUM["D_WGS84",SPHEROID["World_Geodetic_System_of_1984",6  
378137.0,298.257223563]],PRIMEM["Greenwich",0.0],UNIT["Degree",0.01745329  
25199433]]
```

Matching Oracle SRID → 8192

Step -2 → Connected with Autodesk MapGuide Studio

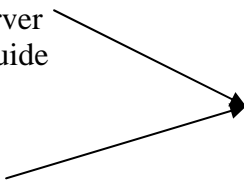


Unable to Display Road Features in the Layer Preview Window.

Installation Details:

MapGuide Studio
MapGuide Server
ApacheMapGuide

Oracle 10gR2



Installed on One Machine.

Installed on another Machine.