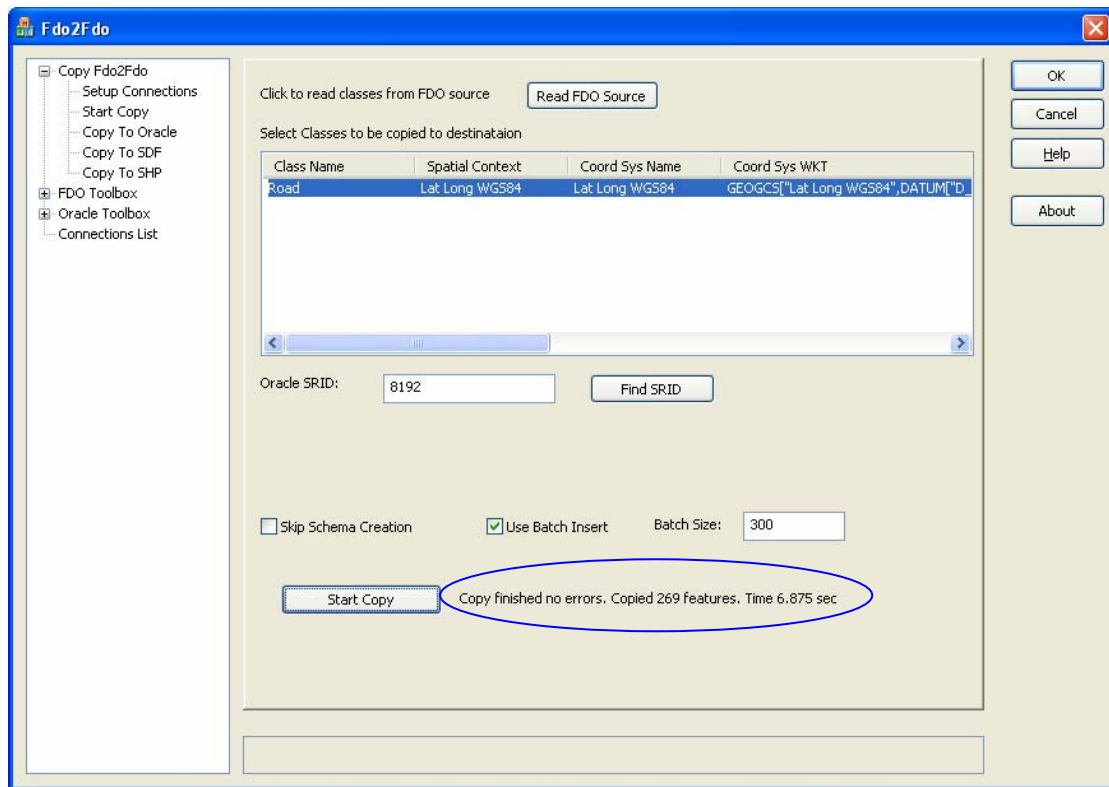
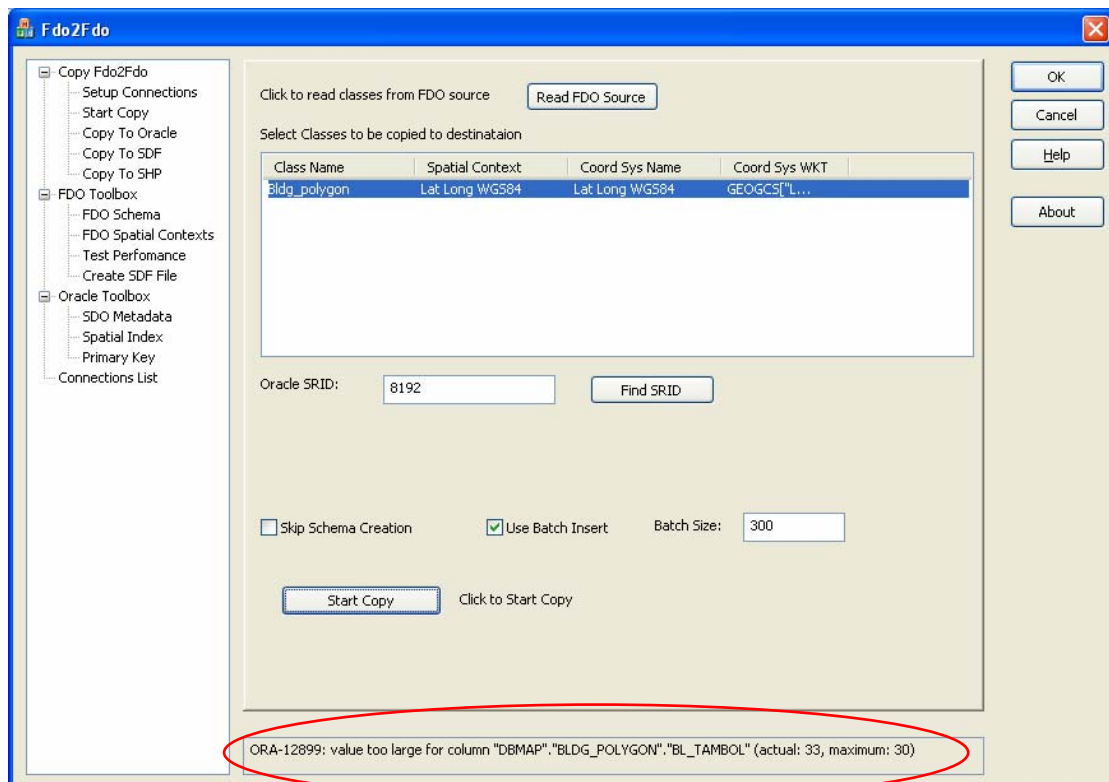


## Oracle King Provider → 0.4.4.0

### Step-1 Shapefile 1 → Oracle10gR2 (Success)



### Step-2 Shapefile 2 → Oracle 10gR2 (Shapefile contains Thai Characters) → FAILED



Though the table is created by **fdo2fdo** provider it gives the error for value too large for the column BL\_TAMBOL. (Actual 33, Maximum 30).

_NAME	HOUSENUM	BL_VILLNUM	BL_VILLAGE	BL_ROAD	BL_TAMBOL	BL_AMPHOE	CHANGWAT	POSTCODE	BL_ADDRESS
					๓๓ ๓๓๓๓ ๓๓ ๓๓๓๓ ๓๓ ๓๓๓๓ ๓๓		11120	SDO_GEOMETRY(2003, 8192, NULL, SDO_ELEM_INFO_ARRAY(1, 1003, 1), SDO_ORDINATE_ARRAY(100.533245, 13.926792, 100.533158, 13.926892, 100.533293, 13.927003, 100.533313, 13.926979, 100.5333, 13.926968, 100.533366, 13.926892, 100.533245, 13.926792))	
					๓๓ ๓๓๓๓ ๓๓ ๓๓๓๓ ๓๓ ๓๓๓๓ ๓๓		11120	SDO_GEOMETRY(2003, 8192, NULL, SDO_ELEM_INFO_ARRAY(1, 1003, 1), SDO_ORDINATE_ARRAY(100.530186, 13.926794, 100.530031, 13.926968, 100.530092, 13.92702, 100.530247, 13.926845, 100.530186, 13.926794))	
					๓๓ ๓๓๓๓ ๓๓ ๓๓๓๓ ๓๓ ๓๓๓๓ ๓๓		11120	SDO_GEOMETRY(2003, 8192, NULL, SDO_ELEM_INFO_ARRAY(1, 1003, 1), SDO_ORDINATE_ARRAY(100.515098, 13.926975, 100.515094, 13.926975, 100.515094, 13.926975, 100.515098, 13.926975))	

Autodesk MapGuide Studio - http://10.0.4.59:8008/mapguide - Administrator - New Layer\*

File Edit View Tools Window Help

Site Explorer: http://10.0.4.59:8008/mapguide

- Oracle
- Oracle\_Data
- Pakret
- Samples

Layer Editor Settings Style

Settings

Data resource used in this layer: Library://Oracle/Oracle\_Data/FeatureSource

Feature Data Setup

Feature class: KingOra:DBMAP~BLDG\_POLYGON~GEOMETRY

**java.exe**

java.exe has encountered a problem and needs to close.  
We are sorry for the inconvenience.

If you were in the middle of something, the information you were working on might be lost.

**Please tell Microsoft about this problem.**  
We have created an error report that you can send to us. We will treat this report as confidential and anonymous.

To see what data this error report contains, [click here.](#)

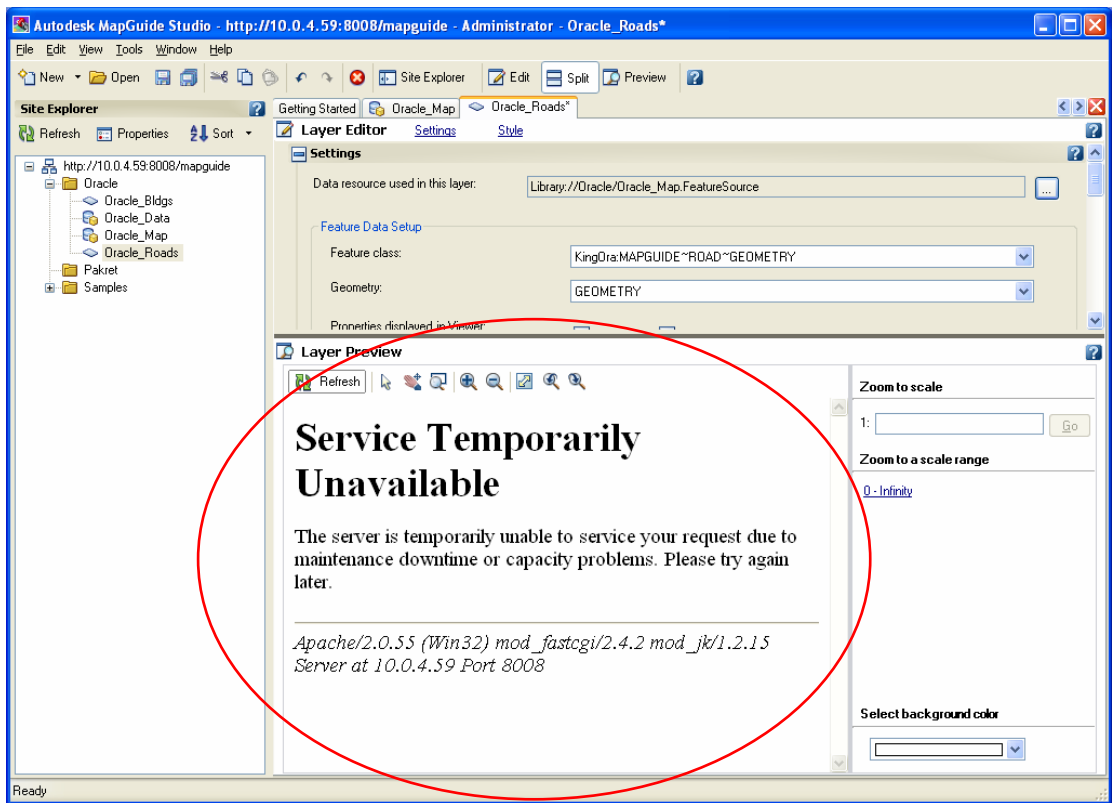
Send Error Report Don't Send

Zoom to scale: 1: [input field] Go

Zoom to a scale range: 0 - Infinity

Select background color: [dropdown menu]

Ready



As you can refer to the oracle spatial table, some data is transferred but not in Thai Language. (Unable to copy the whole data with Unicode characters from shape file to the oracle database).

Once I try to connect to the Oracle database using the King Oracle Provider, It crashes java.exe and gives the error-Service Temp Available, so once I restart the Tomcat I able to preview some part of the data.

One more thing I am using MapGuide open source with java (JSP) development environment (Apache & Tomcat) + MapGuide Studio 2007 and I found that it bit slow as compared to using **php** and it often uses to crash with java.exe or WebMapagent .exe error.

