

Sydney Coastal Councils Group  
& Surveying and Spatial Sciences Institute  
Proudly Presents a GIS Forum:

# Sydney's Integrated Spatial Future

## **"Bringing Managers & Spatial Professionals Together"**

Event Themes:

**Setting the Scene of GIS Risk and Hazard  
Assessment Asset Management  
Information Management Decision Support and  
Communication**

Proudly Supported By:



Principal Sponsors



GISjobs



Geoimage

Sponsors



Wednesday 9 December  
2009  
9:00am - 5:00pm  
Customs House  
The Barnet Long Room  
31 Alfred St  
Circular Quay  
Sydney

**Registrations Essential  
Numbers are Limited**

Discounted SCCG Member  
Council Rate: \$60

Discounted SSSI Rate: \$60  
Others: \$120

To Register:

Please email  
[ragnar@sydneycoastalcouncils.com.au](mailto:ragnar@sydneycoastalcouncils.com.au)  
your Registration details: Name/  
Position, Organisation, Phone Number  
and email address  
+ To make a payment and secure your  
place for the event you must also visit the  
website below and follow the prompts for  
our online payment system:  
<http://www.sydneycoastalcouncils.com.au/Events.htm>



For More Information Please Visit:  
[www.sydneycoastalcouncils.com.au](http://www.sydneycoastalcouncils.com.au)



## Host Organisations:

It has been clearly recognised that a 'wall of mystery', can exist between information required, formats, data sets and databases when communicating graphical and spatial data across departments and organisations.

The SCCG and SSSI's objective for the event, "Bringing Managers and Spatial Professionals Together", aims at creating dialogue and understanding, to demystifying this 'wall' and assist the advancement of this valuable information source.

The Sydney Coastal Councils Group (SCCG) and Surveying and Spatial Sciences Institute (SSSI) are proud to present this event.

### Sydney Coastal Councils Group Inc.



The SCCG was established in 1989 to promote co-ordination between member councils on environmental and natural resource management issues relating to the sustainable management of the urban coastal environment.

The Group consists of 15 councils adjacent to Sydney marine and estuarine environments and associated waterways (Botany Bay, Hornsby, Leichhardt, Manly, Mosman, North Sydney, Pittwater, Randwick, Rockdale, Sutherland, City of Sydney, Warringah, Waverley, Willoughby and Woollahra).

The Group represents over 1.4 million Sydneysiders.

This area encompasses the waterways of Broken Bay; Pittwater; Port Jackson, the lower Lane Cove River, Middle and North Harbour; Botany Bay, the Lower Georges and Cooks River; and Port Hacking.

<http://www.sydneycoastalcouncils.com.au>

### Surveying and Spatial Sciences Institute.



The SSSI was formed in 2009 when members of the Spatial Sciences Institute and the Institution of Surveyors merged.

SSSI brings together the best of the two bodies, and strengthens the voice of spatial professionals in Australia and New Zealand. SSSI is the national body combining the professional disciplines of surveying, mapping, engineering & mining surveying, remote sensing & photogrammetry and spatial information.

The national structure takes advantage of economies of scale and standardised administrative procedures. SSSI caters for the professional people who make up the spatial information industry. It gives a voice to the members of the spatial science community in both the national and international arena.

<http://www.sssi.org.au/>

## Event Sponsors

### Principal Sponsor:

#### Land and Property Management Authority

The LPMA comprises the staff and functions of the Department of Lands, the State Property Authority, the Lake Illawarra Authority, the Hunter Development Corporation, the Office of Rural Affairs and the Office of Biofuels. The LPMA represents knowledge, heritage, and responsible land management.

<http://www.LPMA.nsw.gov.au/>



Land and Property  
Management Authority

#### Common Spatial Information initiative CS2i

The Common Spatial Information Initiative (CS2i) is a whole of government initiative that provides a framework where government, business and the community can access spatial and related information and services, as well as links to a number of spatial industry groups.

This "one stop spatial information website" will lay a firm foundation for:

- Natural Resource and Environmental management
- Planning and managing population growth
- Understanding demographic and climate change
- Land development
- Emergency preparedness and consequence management

<http://www.cs2i.nsw.gov.au/>



### Sponsors:

#### GISjobs

The consultants at GISjobs Australia are spatial industry professionals and recruitment specialists. Our professional consultants provide specialised training and consulting packages to organisations to efficiently meet your spatial needs.

Our consultants all have spatial industry and recruitment backgrounds which enables us to better understand your resource requirements. This allows us to tailor a recruitment package to effectively meet your organisation's spatial needs.

GISjobs can assist with local, national and international spatial industry recruitment requirements. GISjobs Australia is unique in the fact that it has direct links to an extensive range of spatial networks, which enables them to quickly find highly skilled spatial industry professionals. GISjobs Australia specialises in providing personnel, training and consulting for all aspects of the spatial industry.

<http://www.gisjobs.com.au/>



#### Geoimage

Geoimage Pty Ltd is a privately owned Australian company and a leading supplier of satellite imagery, image processing and GeoSpatial services to the user community. Our mission is to provide professional service and quality advice and solutions to our clients. Our success can be attributed to our professional and independent approach to service delivery, striving to determine the best outcome for the client while offering value for money.

Our approach to GeoSpatial Solutions is to align with the business needs of clients, to design solutions that integrate commercially available imagery and GIS data themes to assist in decision making, data interrogation, data publishing, visualisation and dissemination.

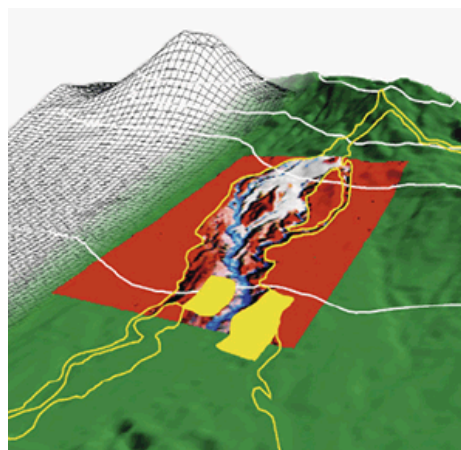
<http://www.geoimage.com.au/>



# Program:

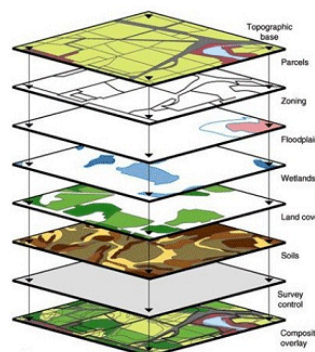


Time	Topic
9:00 am	<b>Registration</b>
9:30: am	<b>Opening and Welcome</b> Mr. Geoff Withycombe, Executive Officer, SCCG SSSI Representative
<b>Theme 1: Setting the Scene</b>	
9:40 am	<b>Key Note Address</b>  <b>“GIS where have we been? Where are we going?”</b>  <b>Prof. Colin Woodroffe - University of Wollongong (TBC)</b>
10:10 am	Change Over
<b>Theme 2: Risk and Hazard Assessment</b>	
10:15 am	<b>“Using GIS to map hazards and vulnerability- focusing on natural disasters and climate change”</b> <b>Prof. John McAneney - Risk Frontiers</b>
10:35 am	Change Over
10:40 am	<b>“Flooding and flood mapping, modelling and communication challenges”</b> <b>Ms. Sue Ribbons - Pittwater Council</b>
10:55 am	Change Over
11:00 am	<b>Landslide Risk Management</b> Geotechnical Hazards and Risk Assessment Landslide Modelling and performance Geotechnical management via GIS <b>Dr. Phil Flentje, University of Wollongong</b>
11:15 am	<b>Risk and Hazard Assessment Discussion</b>
11:30 am	<b>Morning Tea</b> <b>Proudly Brought To You By</b> <b>Geoimage</b>

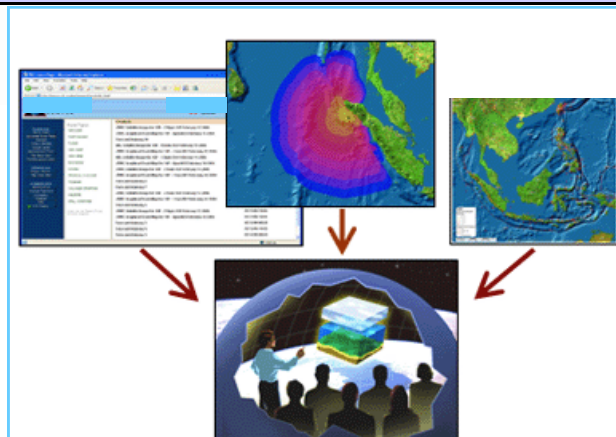




Time	Topic
<b>Theme 3: Asset Management</b>	
11:50 am	Local Government Asset Management Integration – “Corporate Asset Management System” (CAMS) <b>Mr. Greg Livingstone - City of Sydney</b>
12:10 pm	Change Over
12:15 pm	Managing Natural Assets with the assistance of GIS <b>Mr. David Leggett - Hornsby Shire Council</b>
12:30 pm	Change Over
12:35 pm	Estuary Health – Technical and Policy Integration, A State Government Perspective: <b>Mr. Tony Roper – Department of Environment, Climate Change &amp; Water</b>
12:50 pm	Change Over
12:55 pm	<b>Asset Management Discussion</b>
1:10 pm	<b>Lunch</b> Proudly Brought To You By <i>GISjobs</i>
<b>Theme 4: Information Management</b>	
1:40 pm	GIS – What’s Available and how do I get it? <b>Ms. Liz Fulton - Cardno</b>
1:55 pm	Change Over
2:00 pm	Implementation & Review of E-Planning and Update of the Hunter LiDAR Project <b>Mr. John Hudson - Department of Planning</b>
2:15 pm	Change Over
2:20 pm	CS2i NSW Government Common Spatial Information Initiative <b>Mr. Wayne Patterson, LPMA</b>
2:35 pm	Change Over
2:40 pm	<b>Information Management Discussion</b>
2:55 pm	<b>Afternoon Tea</b> Proudly Brought To You By <i>LPMA</i>



Time	Topic
<b>Theme 5: Decision Support and Communication</b>	
3:15 pm	Internal GIS uses: What, How and the Advantages! <b>Mr. Lindsay Mason &amp; Mr. Ross Johnson, City of Ryde</b>
3:30 pm	Change Over
3:35 pm	Using GIS 'Externally' Use of Public Participation Geographic Information Systems (PPGIS) Comparing the "top-down" and "bottom-up" approaches to providing participants with access to GIS <b>Dr. Emma McIntyre, Eco Logical Australia</b>
3:50 pm	Change Over
3:55 pm	<b>Extended presentation</b>  Using GIS to assist policy making: A coastal perspective <b>Prof. Bruce Thom, University of Sydney, Honorary Member SCCG</b>
4:25 pm	Change Over
4:30 pm	<b>Decision Support and Communication Discussion</b>
4:45 pm	<b>Wrap Up SCCG and SSSI</b>
4:55 pm	<b>Drinks</b>
5:30 pm	<b>Close</b>



*This Event Is Proudly Brought To You By:*



*The SCCG Capacity Building Program aims to discover, integrate and develop best practice thinking, learning and action for its Member Councils and relevant Stakeholders to be more effective and efficient with Coastal and Estuary Natural Resource Management, Climate Change Responses and emerging Sustainable Development issues and needs by;*

**Raising Awareness  
Transferring Information and Knowledge  
Increasing Skills and Training  
Facilitating Coordination and Supporting Member Councils**

For more information please contact:

**Sydney Coastal Councils Group Inc.**  
Level 14, 456 Kent St  
GPO Box 1591  
Sydney NSW 2001  
Phone: (02) 9246 7810  
Fax: (02) 9265 9660  
[www.sydneycoastalcouncils.com.au](http://www.sydneycoastalcouncils.com.au)