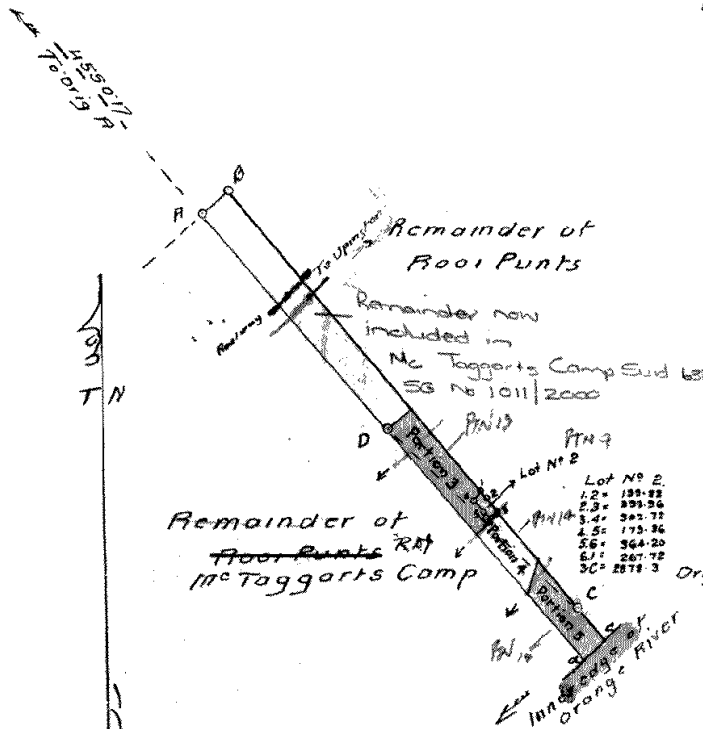


**F** A1936  
General Plan No.

*A. S. Simons*  
Surveyor General  
19 JUN 1929

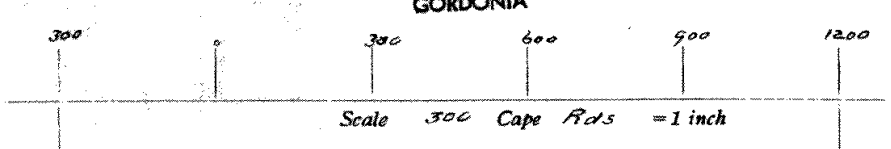


ANGLES		SIDES	
A	90° 55' 30"	AB	68' 16"
B	88° 29' 20"	BC	1051' 58"
C	7° 8' 0"	CD	503' 61"
D	173° 27' 10"	DA	550' 07"
		cc	80' 00"
		dd	575' 00"

CO-ORDINATES	
A	- 2783.55    - 3705.13
B	- 2732.06    - 3660.46
C	- 2064.13    - 4472.66
D	- 2429.84    - 4126.41
Orig A	- 5709.60    - 220.51
Rect. Area 86 M. 255-R.	

Portion 4 of Rooi Punt West  
(a portion of Portion 1) of the farm  
Klip Punt No. 452



The above figure A B C & inner edge of Orange River & D represents 116 Morgen,  
Square Rods, - Square Feet of land, situated " Rooi Punt West "  
in the Division of Gordonia being the Farm Rooi Punt West &  
portion of the Farm Rooi Punt transferred to  
R. W. F. Steyn on Dec 3<sup>rd</sup> 1914

Bounded as indicated above

Surveyed and beaconed by me according to regulations

*R. D. Jackson*  
Government Land Surveyor  
Sept 1926

This Diagram belongs to the transfer deed issued this day,  
in favour of B. Broude

21.9.1929

Registrar of Deeds.