

PROPOSAL TO HOST

FOSS4G Conference November 2025

AUCKLAND, NEW ZEALAND





CONTENTS

Inside our Proposal



PDF Navigation Controls

Click on a contents line to go to that page.



[Back to Title Page](#)

[Previous Section](#)

[Next Section](#)

Waitematā Harbour

Contents

Introduction	2	OSGeo In Our Region	25
Host Organisation	3	COVID-19 Considerations	26
Your Host City	8	The Budget	27
Navigating your way to New Zealand	9	Conference Program	31
Visa Information	11	Dates and Events	33
Useful Information	12	Social Event Spaces	34
Conference Venue	14	Other Relevant Details	35
Accommodation	16	Māori Culture Throughout Event	38
Proximity Map	17	Auckland at a Glance	40
Conference Venue Information	18	Experience Auckland	41
Supporting Local Organisations	19	Things To Do	43
Local Organising Committee	20	Sustainable New Zealand	45
		Corporate Social Responsibility (CSR) engagement	46



INTRODUCTION

Why Auckland

Kia Ora and Welcome to the Future of Open Geo: FOSS4G 2025 in Auckland!

Tēnā koutou katoa (Greetings to all of you)

The passionate geospatial community of OSGeo Oceania extends a warm invitation to host the global FOSS4G conference in Auckland, New Zealand in 2025. We envision Auckland as the stage for a vibrant gathering that fosters collaboration and celebrates innovation in the exciting world of Free and Open Source Software for Geospatial (FOSS4G). Our Pacific family is a warm and welcoming group and it's exciting to have this opportunity to share our place with the global FOSS4G community.

A Celebration of Open Source

Auckland is a city that thrives on open collaboration and knowledge sharing. Hosting FOSS4G 2025 aligns perfectly with our commitment to open data, transparency, and accessibility. Imagine a conference where developers, researchers, and users come together to push the boundaries of FOSS4G, sharing their expertise and propelling the future of open geospatial solutions.

A World-Class Hub for Geospatial Innovation

New Zealand boasts a rich history of geospatial innovation, and Auckland is at the forefront. Our city is home to leading research institutions, cutting-edge tech companies, and a thriving FOSS4G community. FOSS4G 2025 in Auckland would provide a unique platform to showcase these strengths, fostering international collaboration and knowledge exchange.

Beyond the Conference: A Land of Open Discovery

Auckland sits nestled amongst stunning landscapes, a living laboratory for geospatial exploration. Delegates can experience geothermal wonders like rivers of boiling water, navigate lush rainforests with open-source mapping tools, or explore the rich cultural heritage of our indigenous Māori people.

Auckland is also the primary gateway to the wider Oceania region. This vibrant city boasts international air connections, making it a convenient jumping-off point for exploring the diverse islands and cultures of the South Pacific. From Auckland, you can easily explore the island paradises including Fiji, Samoa, Tonga and New Caledonia, the beauty and diversity of Australia, or the unique cultures of the Pacific. It's the perfect launching pad for an unforgettable adventure across Oceania.

A Commitment to Openness and Inclusion:

We are dedicated to creating an inclusive and welcoming environment for everyone at FOSS4G 2025. At this conference, we believe in hosting an environment where everyone feels welcome to participate and contribute. We celebrate diversity of thought, background, and experience, recognizing it enriches our discussions and leads to groundbreaking solutions. We'll provide a platform for diverse voices to be heard, offer resources to ensure accessibility, and cultivate a respectful atmosphere. We have a history of doing this for our Oceania conference series and continue to improve our work that supports diversity, equity and inclusion.

Join Us in Shaping the Future of Open Geospatial

We believe Auckland offers the perfect environment to host a successful and impactful FOSS4G conference in 2025. Our experienced team is dedicated to providing exceptional logistical support, innovative technological solutions, and a warm Kiwi welcome.

Let's work together to make FOSS4G 2025 in Auckland a landmark event, accelerating the adoption and advancement of open geospatial solutions around the world!

Kia Kaha, Kia Maia, Kia Ora! (Be strong, be brave, be well!)

The Auckland FOSS4G 2025 Conference
Organising Committee





Reasons for hosting the conference

How will your conference succeed financially (making a profit)?

We have identified the following factors as contributing to the financial success of FOSS4G Auckland 2025:

- **Ensuring ticket prices are competitive and aligned with the perceived value of the conference**
Our aim is to provide tiered ticket prices in line with previous FOSS4G events along with a well funded Travel Grant Program (TGP). We recognise that while some people are supported by employers, others pay for themselves, so we'll balance the pricing so that it works for both.
- **Effective marketing to the target audience**
A dedicated and experienced marketing team will be using social media as well as traditional marketing avenues, working in conjunction with community groups world-wide.
- **Ensure the costs of running the conference are managed effectively**
A dedicated and experienced financial team (including professional accountancy services) will provide full transparency to OSGeo and OSGeo Oceania before, during, and after the conference with regular updates on budgeted as well as actual revenues and expenditure. We are in discussions with a principal conference organiser to help support us with administration and budgets.
- **Secure sponsorships and partnerships to help offset the costs of the conference and generate additional revenue**
A dedicated sponsorship team will be tasked with securing sponsors for the conference. This team will produce a sponsorship prospectus similar to the following previous years sponsorship prospectus:
[FOSS4G SoTM Oceania 2024 Sponsorship Prospectus](#)
[FOSS4G SoTM Oceania 2023 Sponsorship Prospectus](#)
Our venue partners are Auckland Institute of Technology (AUT), who have already indicated they will provide in-kind sponsorship of the conference venue, significantly reducing venue costs.





Reasons for hosting the conference

How will your conference succeed socially (giving people the unstructured space and time to meet and engage with one another)?

FOSS4G Auckland 2025 will be designed to foster a vibrant and engaging social atmosphere that goes beyond the presentations. We believe strong connections are key to a successful event, and we've incorporated several elements to make that happen:

- **Dedicated Networking Opportunities:** We'll provide dedicated time for attendees to connect through an Icebreaker evening event, a Gala Dinner, dedicated Breakfast events, events for Women in Geospatial and TGP participants as well as designated networking areas. These opportunities will allow attendees to meet new colleagues, share ideas, and build lasting relationships.
- **Interactive Sessions:** Many sessions will incorporate interactive elements like Q&A panels and breakout discussions, encouraging attendee participation and fostering a sense of community.
- **Social Media Integration:** We'll encourage the use of a conference hashtag to share experiences, spark discussions online, and create a virtual space for attendees to connect before, during, and after the event.
- **Welcoming Environment:** Our friendly Local Organising Committee and volunteers will be on hand to greet you, answer questions, and help facilitate connections. The venue at AUT City campus creates a comfortable and inviting atmosphere for socializing.

By prioritizing these elements, we aim to create a conference experience that is not only intellectually stimulating but also fosters strong social connections, making it a truly valuable and memorable event.





Reasons for hosting the conference

How will your conference provide open source education (providing good training opportunities to new users)?

FOSS4G Auckland 2025 is committed to fostering a welcoming and educational environment for new users of Free and Open Source Software for Geospatial. We recognize that open source offers immense power, but navigating the world of FOSS4G solutions can be daunting. We'll provide a springboard for attendees learning journey with a range of targeted open source education initiatives:

- **Dedicated Beginner Tracks:** We'll offer dedicated conference tracks specifically designed for new FOSS4G users. These beginner-friendly sessions will provide clear introductions to key FOSS4G concepts, solutions, and workflows.
- **Introductory Workshops:** Interactive workshops will guide participants through the fundamentals of popular FOSS4G solutions. Attendees will gain hands-on experience with real-world datasets and scenarios, building confidence and practical skills.
- **"Ask Me Anything" Sessions:** We'll host "Ask Me Anything" sessions with experienced FOSS4G users and developers. This informal setting will allow newcomers to seek guidance, clarify concepts, and gain valuable insights from seasoned practitioners.
- **Mentorship Program:** Piloting a mentorship program connecting seasoned FOSS4G users with new attendees. This personalized guidance can be invaluable for navigating the initial learning curve and fostering a sense of community support.
- **"Open Office Hours":** Hosting dedicated "Open Office Hours" with FOSS4G project developers or trainers. This will allow new users to ask questions, troubleshoot challenges, and receive personalized guidance in a smaller group setting.

By providing these resources and opportunities, we aim to:

- **Lower the Barrier to Entry:** Make FOSS4G more accessible for new users by offering clear introductions and practical starting points.
- **Build Confidence and Skills:** Empower attendees with hands-on experience and practical knowledge to confidently explore and utilize FOSS4G solutions.
- **Foster a Supportive Community:** Create a welcoming and helpful environment for new users to ask questions, seek guidance, and connect with the broader FOSS4G community.

We believe everyone deserves the opportunity to participate in the open source geospatial revolution. FOSS4G Auckland 2025 will provide the education and support to ignite all attendees' journeys into the exciting world of FOSS4G.





Reasons for hosting the conference

How will your conference promote open source geospatial software (bringing new organizations into the open source community)?

FOSS4G Auckland 2025 will be a proud advocate for Free and Open Source Software for Geospatial. We recognize the immense potential of FOSS4G to advance the field and empower individuals and organizations alike.

Here's how we'll be promoting it:

- **Dedicated Tracks and Sessions:** We'll feature dedicated conference tracks and sessions showcasing the latest advancements in FOSS4G. These sessions will highlight successful implementations, explore the benefits of open-source workflows, and provide practical guidance for getting started.
- **Workshops and Demos:** Interactive workshops and demonstrations will offer hands-on experience with popular FOSS4G tools and platforms. Attendees will learn the power of open-source tools through practical exercises and gain valuable skills to apply in their own work.
- **Open Source Project Showcase:** We'll dedicate space for an open-source project showcase, allowing developers and users to connect, share their work, and foster collaboration on key projects within the FOSS4G community.
- **Keynote Speakers:** Leading figures in the Global FOSS4G movement will be invited as keynote speakers to inspire attendees and highlight the transformative impact of open-source solutions. We will ensure we bring voices from the Pacific to keynote too, highlighting our region and ensuring that diverse voices are heard.
- **Code Sprint:** A Code Sprint focused on developing innovative solutions and improving existing FOSS4G solutions. This will provide an exciting platform for developers to collaborate, push boundaries, and contribute to the advancement of the open-source ecosystem.
- **Community Building Events:** We'll facilitate networking events specifically for FOSS4G enthusiasts, fostering collaboration and knowledge exchange within the open-source community.

By promoting FOSS4G through these initiatives, we aim to:

- **Raise awareness:** Increase visibility and understanding of the vast capabilities and growing ecosystem of FOSS4G solutions.
- **Encourage adoption:** Inspire attendees to consider and integrate open-source solutions into their workflows.
- **Support the community:** Provide a platform for the FOSS4G community to connect, collaborate, and drive innovation.

We believe open source geospatial software is a powerful force for positive change in our field. This conference will be a catalyst for promoting its growth and impact.





Reasons for hosting the conference



Promoting inclusivity

At FOSS4G Auckland 2025, we are committed to creating a space where everyone feels valued, respected, and empowered to participate. We believe that diversity of thought, background, and experience strengthens our community and leads to a richer learning environment.

Here's how we're promoting inclusivity:

- **Diverse Speaker Lineup:** We actively seek out speakers from a variety of backgrounds and perspectives to ensure our program reflects the richness of our field.
- **Inclusive Language:** We encourage the use of inclusive language in all presentations, materials, and interactions throughout the conference.
- **Code of Conduct:** We will have a clear code of conduct in place that outlines expectations for respectful behaviour and prohibits discrimination or harassment. [OSGeo Oceania FOSS4G Code of Conduct](#)
- **Safe Spaces:** We will designate safe spaces within the venue where attendees can relax and recharge in a comfortable and inclusive environment.
- **Diversity & Inclusion Committee:** We have a dedicated Diversity & Inclusion committee actively working to identify and address any potential barriers to participation. HOTOSM have recognised our very own OSGeo Oceania members Carrol Chan and Elisa Puccioni as Diversity, Equity and Inclusion Champions in the Open Mapping Women Awards 2024.

We understand that creating a truly inclusive environment is an ongoing process. We welcome your feedback and suggestions, and we are committed to continuously improving the accessibility and inclusivity of FOSS4G Auckland 2025 for everyone.



YOUR HOST CITY

Tāmaki Makaurau Auckland

FOSS4G Auckland 2025 will be held in Auckland (or Tāmaki Makaurau in Māori), New Zealand.

Tāmaki Makaurau – A place desired by many

Tāmaki Herenga Waka – The place where many canoes gather

These are the Māori names given to Auckland. They speak of our diverse landscapes, beautiful harbours and fertile soils. They speak of the coming together of different iwi (tribes) to meet and trade. Today, people from all over the world visit Tāmaki Makaurau Auckland for the same reasons – to experience our natural beauty and unique Māori culture.

In the spirit of manaakitanga – hospitality, generosity, and openness of spirit – we welcome our visitors as guests. Discover this spirit as you connect with the people, land and stories that have shaped our region.

Auckland with a population of over 1.5M is the largest city in New Zealand, and is situated on the country's North Island. Known as the "City of Sails", Auckland is surrounded by stunning beaches, picturesque islands, and a stunning harbour. The city boasts a vibrant culture,

with a rich history and a diverse population that includes Māori, Pacific Islander, Asian, and European communities. New Zealand is LGBTQ-friendly and was one of the first countries to legalise same-sex marriages.

What truly defines Auckland are our people. Known for our youthful energy, open-minded attitudes, and a deep sense of intimacy and connection within the diverse community, Aucklanders foster an environment that is welcoming, easy-going and relaxed. This dynamic region nurtures creativity and fosters positive relationships, making it a place where everyone feels at home.

Tāmaki Makaurau embodies inclusivity, innovation and sustainability. This is a region that thrives on the collective spirit of its residents—a hub where creativity and growth coexist, attracting forward-thinkers and early adopters who add to the city's vibrant tapestry.





International Access

Auckland is serviced by 27 Airlines with non-stop flights from the Middle East, Asia, North and South America and the Pacific, and 1-stop flights from Europe and Africa. Flights to Auckland (AKL). Domestic and trans-Tasman flights are frequent, and there is a well-established domestic bus, train and ferry network.

Origin Region	Estimated Round Trip Cost (USD)
Africa	\$2,100.00
Asia	\$1,250.00
Australia	\$800.00
Europe	\$2,250.00
Middle East	\$2,050.00
North America	\$1,800.00
South America	\$2,650.00



Important Notes:

- These are average costs based on various travel data sources and can fluctuate depending on the time of year, airline, booking time, and travel class (economy, business, first).
- This table only includes a selection of major airports. You can find more specific fares using travel search engines or contacting airlines directly.
- Additional costs like taxes, fuel surcharges, and checked baggage fees may apply.

Accurate as at April 2024



Internationally Connected

New Zealand is serviced by all major airlines including members of Star Alliance, oneworld and SkyTeam.



 25

International airlines fly direct to Auckland from 44 destinations around the world

504

Weekly flights connecting Auckland to the world

60 

Countries have a visa waiver agreement with New Zealand

Accurate as at February 2020



Visa Information

Entry to New Zealand is easy with a little preparation.

Visa Requirements

Having a valid passport and the right visa is key to a trouble-free entry into New Zealand.

[Visa and entry requirements to New Zealand >](#)

Non-Visa Waiver Countries

Delegates from non-visa waiver countries will need to apply for a visa at least 30 days before travelling to New Zealand and ensure their passport is valid for at least three months longer than their expected departure date. For those countries that don't have a visa waiver agreement, you will need to apply for a visitor visa (NZD\$211) and generally takes up to 4 weeks to process.

Visa Waiver Countries and Territories

There are 60+ visa waiver countries and territories defined by Immigration New Zealand. If your delegates are Australian residents, or citizens of a country which has a visa waiver agreement with New Zealand, they do not have to apply for a visa. However, they must hold an NZeTA before they travel. Delegates are advised to allow 72 hours for processing before departure and upon arrival into New Zealand, provide detail that they are a genuine visitor, have enough money for their stay and a travel ticket out of New Zealand. Australian citizens do not need an NZeTA to enter New Zealand.

List of visa waiver countries and territories*

Australia	Hong Kong	Oman
Andorra	Hungary	Poland
Argentina	Iceland	Portugal
Australia	Ireland	Qatar
Austria	Israel	Romania
Bahrain	Italy	San Marino
Belgium	Japan	Saudi Arabia
Brazil	Korea (South)	Seychelles
Brunei	Kuwait	Singapore
Bulgaria	Latvia	Slovak Republic
Canada	Liechtenstein	Slovenia
Chile	Lithuania	Spain
Croatia	Luxembourg	Sweden
Cyprus	Macau	Switzerland
Czech Republic	Malaysia	Taiwan
Denmark	Malta	United Arab Emirates
Estonia	Mauritius	United Kingdom
Finland	Mexico	United States of America
France	Monaco	Uruguay
Germany	Netherlands	Vatican City
Greece	Norway	

*Conditions may apply.



USEFUL INFORMATION

What you need to know



Auckland Airport

Safety and Security

New Zealand is generally a very safe place to travel, with a relatively low crime rate. However, it is advisable to observe the same precautions with your personal safety and your possessions as you would in any other country or at home. New Zealand is a democratic and politically stable country. The New Zealand government has some advice: [Health & Safety >](#)

Religion

New Zealand has no state religion or established church and freedom of religion has been protected since the signing of the [Treaty of Waitangi](#) in 1840.

New Zealand is home to Christians, Hindus, Buddhists, Muslims, Sikhs, Jews and a number of newer religious movements. Most New Zealanders value this diversity. More than 2 million New Zealanders say they have no religion (Stats NZ).

Culture

Auckland is a vibrant tapestry of cultures, boasting the largest Polynesian population in the world. Indigenous Māori traditions intertwine with European influences, while vibrant Asian and Pacific Island communities add their unique flavours. From bustling markets overflowing with exotic spices to sacred Māori meeting houses, Auckland offers a dynamic experience where languages, customs, and cuisines interweave to create a truly multicultural city.

LGBTQIA+ Laws

New Zealand is a socially progressive country with a reputation for making many different types of people feel at home, and is often called one of the most LGBTQIA+ friendly countries in the world.

Most New Zealanders are open-minded, accepting and positive towards the LGBTQIA+ community, which is also sometimes known as the 'rainbow' community or the LGBTQIA+ community.

In terms of Laws, in 1993, discrimination on the grounds of sexual orientation was outlawed. In 2004 New Zealand instituted civil union (for both same-sex and opposite sex couples), and in 2013 same-sex marriage was legalised. Child adoption by same-sex couples was also legalised in 2013.

Auckland has been rated alongside Toronto, San Francisco and London as one of the top gay-friendly cities in the world, with a remarkable pride festival held every year.

Currency

New Zealand dollars (\$) and cents (c). There are five notes (\$5, \$10, \$20, \$50, \$100) and five coins (10c, 20c, 50c, \$1, \$2).

Driving

Drive on the left side of the road in New Zealand. All drivers, including visitors from other countries, must carry their licence or permit at all times when driving. Delegates will only be able to drive the same type of vehicles they are licensed to drive in their home country.

Electricity

240V, 50Hz, with Australian/New Zealand pattern three-pin sockets.

Emergency Services

111 is the emergency phone number for police, fire and ambulance services.

Goods and Services Tax (GST)

New Zealand has a 15 per cent GST. Overseas visitors cannot claim this back. Some stores may waive GST if delegates show onward or return air tickets, or when international shipment of goods is arranged.

Health

Public and private hospitals provide a high standard of treatment and care. Medical services are not free to visitors, so travel insurance that covers medical and health is recommended. Some countries have reciprocal health care rights.

Languages

English is the everyday language in New Zealand, with Māori and New Zealand Sign Language also official languages.

Mobile Telephones

Like most countries, New Zealand operates on a 900 or 1800 MHz network. However, some mobiles cannot use international roaming on this frequency. Delegates may buy or rent a New Zealand-compatible phone or sim card upon arrival.

Smoke-Free Policies

In New Zealand it is illegal to smoke indoors. Cigarettes cannot be sold to anyone under 18.

i-site Visitor Information

i-SITE is New Zealand's official visitor information centre network with more than 80 i-SITES nationwide, including locations in Auckland. i-SITES provide free expert local knowledge and services including itinerary planning and nationwide accommodation and activity bookings.

Auckland Information



Tourism

Auckland is a popular destination for tourism, offering a range of world-class attractions and activities. Visitors can explore the city's many museums and galleries, sample local cuisine at the bustling markets and restaurants, or take a scenic cruise on the harbour or to the local extinct volcano. For those looking for a bit of adventure, Auckland is a great base for exploring the stunning natural beauty of New Zealand, with opportunities for hiking, skiing, and water sports.

Discover Auckland: <https://www.aucklandnz.com/>



Public Transport

There are multiple transport options from Auckland Airport to the city centre including a combination of bus, rail, shuttle, ride-sharing and taxi services. Auckland Transport HOP card is a reusable prepaid smart card for travel on trains, ferries and buses around Auckland.

<https://at.govt.nz/bus-train-ferry/at-hop-card>



Weather

Auckland's climate is classified as subtropical with warm humid summers and mild damp winters. November is nearing the end of spring with warm sunny days and low rainfall.

Daytime temperatures range from 20° to 30° Celsius (60° to 86° Fahrenheit) during the warmer seasons (November to March), and from 10° to 17° Celsius (50° to 63° Fahrenheit) in the cooler seasons (April to October).



CONFERENCE VENUE

Auckland University of Technology

AUT is one of the world's top
**MILLENNIAL
UNIVERSITIES**
(those founded in the 21st century)

QS Ranking 2021

Auckland University of Technology

Conference venue

Our venue partners are Auckland Institute of Technology (AUT), who have already indicated they will provide in-kind sponsorship of the conference venue.

Located in the heart of Auckland City, [AUT City Campus](#) is within minutes of the central business district and is close to public transport, parking, and accommodation options.

There are over 600 bookable spaces on the AUT campus ranging from full conference room facilities, auditorium and lecture theatres located in the [WG Building](#) to modern classroom spaces fully equipped for running workshops.

High Speed internet access is available across the entire AUT campus and supports live streaming and hybrid conferencing.

Workshop facilities

AUT offers modern classroom spaces fully equipped for running workshops from the [WF Building](#) which is a multi story dedicated teaching space.

Workshops will be run with attendees using Bring Your Own Device (BYOD).

Small business meetings

Modern classroom spaces fully equipped for running small business meetings are available at AUT in the WF Building which is a multi story dedicated teaching space.

These will be available for

- Committee
- Sponsors
- Birds of feather groups

All AUT venue areas have modern full accessibility facilities.





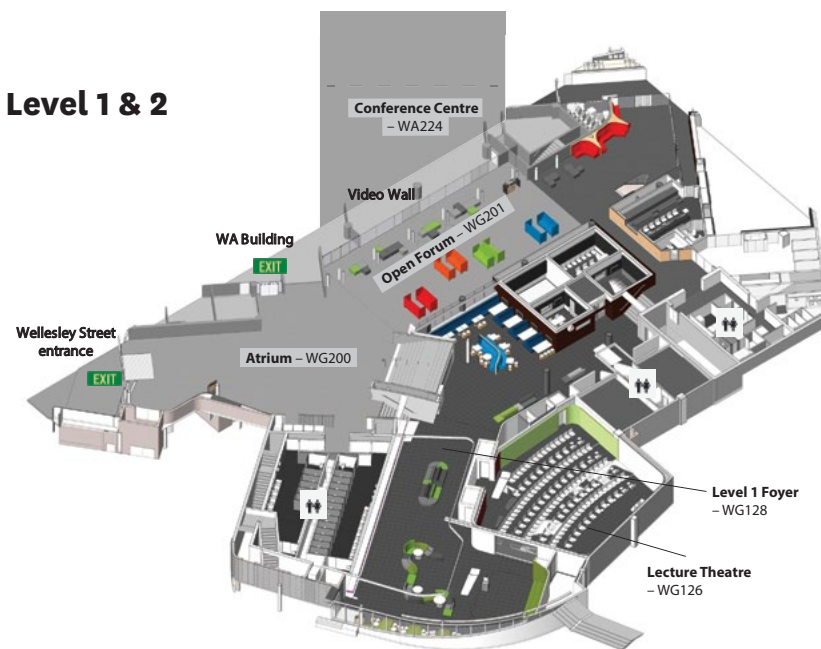
CONFERENCE VENUE

Capacity

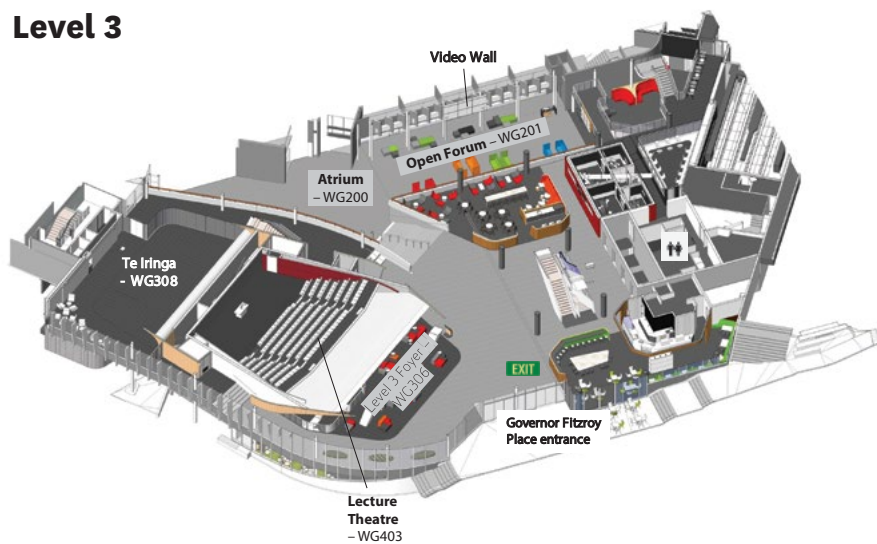
Room Name	Banquet	Classroom	Cocktail	Theatre	Area m ²
Lecture Theatre — WG126	-	-	-	140	-
Level 1 Foyer — WG128	-	-	150	-	135
Conference Centre — WA224	200	240	250	250	350
Atrium and Open Forum — WG200 & WG201	360	-	550	300	303
Te Iringa — WG 308	150	-	185	180	278
Level 3 Foyer — WG306	-	-	200	-	135
Lecture Theatre — WG403	-	-	-	386	-
Lecture Theatre — WG404	-	-	-	97	-
WG403 and WG126 linked via video live feed	-	-	-	526	-

Please note this is a small selection of the available venues at AUT City campus.

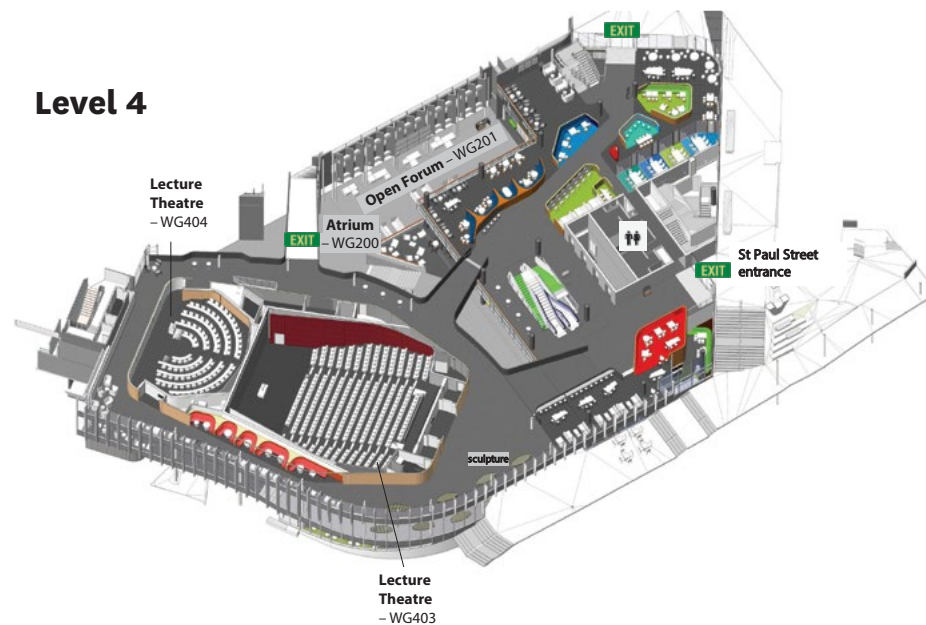
Level 1 & 2



Level 3



Level 4





ACCOMMODATION

Central Auckland offers a range of accommodation options to suit all budgets and styles. From luxurious hotels with stunning harbour views to trendy boutique stays and budget-friendly backpacker hostels, you'll find something perfect for your needs. Whether you crave a social atmosphere or a private haven, Auckland's central hub has you covered.

Auckland City allows attendees to select from a wide range of accommodation options less than 15 minutes walk from the venue. We are also working with AUT on the availability of onsite student accommodation.

Hostels/Student	Hotel (Budget)	Hotel (Mid-range)	Hotel (Luxury)
\$60-\$100NZD	\$80-\$150NZD	\$150-\$300NZD	\$300+ NZD
\$30-\$60USD	\$47-\$89USD	\$89-\$177USD	\$177+ USD



8,000

AUCKLAND'S CBD ALONE
OFFERS MORE THAN 8,000 ROOMS FROM 5 TO 2-STAR



PROXIMITY MAP

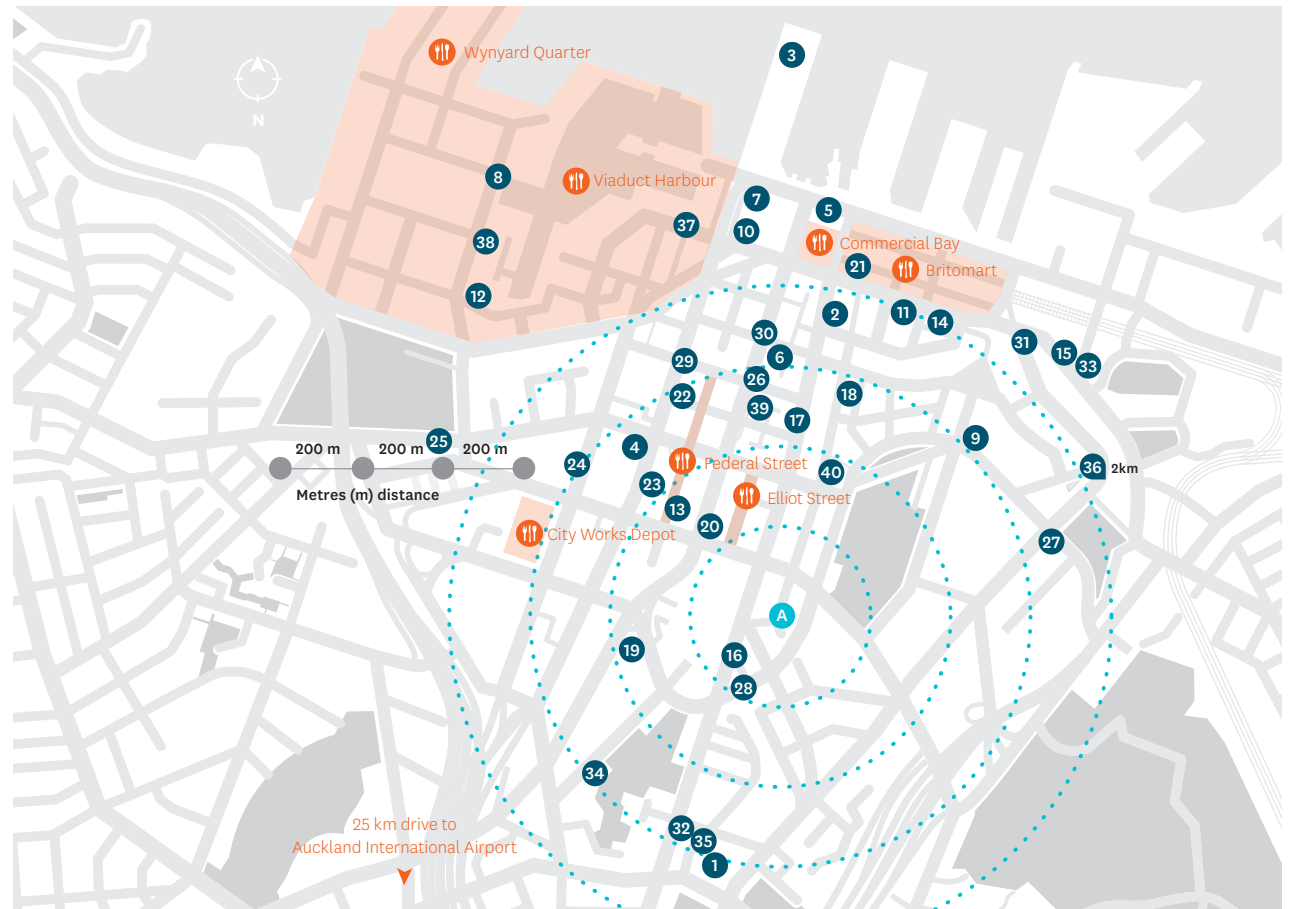
Qualmark is New Zealand's star grading system for ranking accommodation providers and venues. Rates from Backpackers are based on 4 person rooms. *Self rated.

Accommodation providers and dining precincts within close proximity to the proposed conference venue:

ACCOMMODATION PROVIDER	QUALMARK RATING
1 Cordis, Auckland	5 star
2 Fable Auckland, M Gallery	5 star
3 Hilton Auckland	5 star
4 Horizon by SkyCity	5 star
5 InterContinental Auckland	5 star
6 JW Marriott Auckland	5 star
7 M Social Auckland	5 star
8 Park Hyatt Auckland	5 star
9 Pullman Auckland Hotel & Apartments	5 star
10 QT Auckland	5 star
11 SO/ Auckland	5 star
12 Sofitel Auckland Viaduct Harbour	5 star
13 The Grand by SkyCity	5 star
14 The Hotel Britomart	5 star
15 Adina Apartment Hotel Auckland Britomart	4.5 star*
16 Airedale Boutique Suites	4.5 star
17 CityLife Auckland — Apartments	4.5 star
18 Crowne Plaza Auckland	4.5 star
19 Grand Millennium Auckland	4.5 star
20 Hotel DeBrett	4.5 star
21 Mövenpick Hotel Auckland	4.5 star
22 Rydges Auckland	4.5 star
23 SKYCITY Hotel	4.5 star
24 Sudima Auckland City	4.5 star
25 Swiss-Belsuites Victoria Park	4.5 star
26 voco Auckland City Centre	4.5 star*
27 Copthorne Hotel Auckland City	4 star
28 Four Points by Sheraton Auckland	4 star
29 Heritage Auckland	4 star*
30 Holiday Inn Express Auckland City Centre	4 star*
31 Imagine Beach Road	4 star
32 Mercure Auckland Queen Street	4 star
33 Nesuto Stadium Hotel and Apartments	4 star

ACCOMMODATION PROVIDER	QUALMARK RATING
34 Parkside Hotel & Apartments Auckland	4 star*
35 St. Martins Apartment Hotel	4 star
36 The Parnell Hotel & Conference Centre	4 star
37 The Sebel Auckland Viaduct Harbour	4 star
38 Travelodge Hotel Wynyard Quarter	4 star*
39 ibis Budget Auckland Central	3 star
40 Attic Backpackers	Backpackers

CONFERENCE VENUES
A Auckland University of Technology (AUT)
🍴 Auckland Dining Precincts





Conference venue information

Venue capacities

The maximum number of attendees that can be catered at AUT for a plenary session 385 + 300 overflow in adjoining theatres. If we need to go bigger, we can explore other nearby venues to use for the plenary that would accommodate over a thousand attendees.

Venue accessibility

Auckland is a very accessible city, with public transport featuring ramps, lowered buses, and disability concessions. Many attractions prioritise accessible paths and facilities, while resources like mobility scooter rentals and accessible parking are available.

All AUT venue areas have modern full accessibility facilities. AUT is a founding partner of Be. Accessible in 2011, and since then have supported accessibility initiatives for Auckland and for the university. More information is available via the [Be. Accessible website](#).



Childcare facilities

Providing a child-friendly conference offers a win-win situation for attendees at FOSS4G Auckland 2025. Parents can focus on the conference content knowing their children are safe and engaged in age-appropriate activities. We feel this will lead to increased participation and higher satisfaction. It also demonstrates the conference's commitment to diversity and inclusion, attracting a wider range of professionals.

We will offer an on-site professional Childcare Programme for the duration of FOSS4G Auckland 2025.

Our Childcare Programme for FOSS4G Auckland 2025 will be a sponsorship option (but even if it isn't sponsored, we'll provide it).

In addition, AUT has a dedicated parent room and also facilities for feeding and changing babies across campus.

Translation services

The conference will be an English speaking event without translation services.

During Plenary sessions we will be able to offer professional sign-language interpreters.





Supporting local organisations

Supporting local organisations, universities, user groups, and individuals are vital to the success of FOSS4G Auckland 2025 for several reasons:

- **Stronger Community:** Local involvement fosters a sense of community ownership and pride in the event. This collective effort creates a more vibrant and welcoming atmosphere for all attendees.
- **Deeper Expertise:** Local organisations and individuals bring a wealth of knowledge specific to Auckland and the Oceania region and its geospatial sector. Their insights enrich the conference program and discussions.
- **Long-Term Impact:** By supporting local entities, FOSS4G Auckland 2025 contributes to the sustainability of the geospatial open source community in the Oceania region. This investment fosters future innovation and collaboration.

Organisation	Commitment	Location
OSGeo Oceania	Oversight, Fiscal Sponsor TGP Funding	Oceania
OSGeo	Oversight, TGP Funding	Worldwide
Auckland University of Technology AUT	Venue Partner Volunteers Academic Partner	Auckland, New Zealand
Tourism New Zealand and Auckland Convention Bureau	Financial Feasibility Study Promotional Material, PCO	Auckland, New Zealand
Land Information New Zealand	Event Partner	New Zealand
HOT Open MappingHub (Asia Pacific)	Event Partner	Asia Pacific
QGIS User Group Australia	Event Partner	Australia
Whanganui District Council	Local Conference Committee	New Zealand
Auspatious	Local Conference Committee Committed Sponsor	Australia
North Road	Local Conference Committee Potential Sponsor	Australia
Kenex	Local Conference Committee Potential Sponsor	New Zealand
Koordinates	Local Conference Committee Potential Sponsor	New Zealand
Meta	Local Conference Committee Potential Sponsor	Worldwide
Auckland Transport	Local Conference Committee Potential Sponsor	New Zealand
Woods	Local Conference Committee Potential Sponsor	Australia
NGIS	Local Conference Committee Potential Sponsor	Australia
GHD	Local Conference Committee	Worldwide



Meet the Team

Our Auckland Local Organizing Committee (ALOC) members have extensive experience organizing FOSS4G events in the Oceania region, including the following major regional conferences:

- 2024 Hobart, Australia (FOSS4G SotM Oceania 2024)
- 2023 Auckland, New Zealand – FOSS4G SotM Oceania 2023
- 2022 Suva, Fiji – Pacific Geospatial Conference 2022 – OSGeo Oceania
- 2021 Local Hubs and Video Streams – FOSS4G SotM Oceania 2021
- 2020 Local Hubs and Video Streams – FOSS4G SotM Oceania 2020
- 2019 Wellington New Zealand – FOSS4G SotM Oceania 2019
- 2018 Melbourne Australia – FOSS4G SotM Oceania 2018

Video footage from these events is available [here](#) >.

ALOC is made up of the following enthusiastic individuals from across the Oceania region:



ALOC
Co-Chair

Simon Nitz

New Zealand

Simon is the GIS Lead at Whanganui District Council, a local government organization in New Zealand. Simon is highly regarded throughout Australia and New Zealand as a leader in his field with 30+ years in the industry. He has provided GIS consulting services to organizations in New Zealand and Australia, focusing on FOSS4G desktop and web mapping solutions. In the 90's and 00's Simon was chair of the MapInfo User Group in New Zealand for 16 years. Simon has also been involved in organizing recent FOSS4G SotM Oceania events.

[Whanganui District Council](#) >



ALOC
Co-Chair

Alex Leith
(OSGEO Oceania)

Australia

Alex is an open geospatial technologist with a track record in delivering operational data infrastructure. With extensive expertise in software development, cloud infrastructure, and program governance, Alex is a global leader in the field of Earth observation. Alex is a founding director of OSGeo Oceania and former Chair of the organisation. Alex has been involved in organising small and large events, including FOSS4G SotM Oceania events in Melbourne, Wellington and Auckland.

[OSGeo Oceania](#) >



LOCAL ORGANISING COMMITTEE

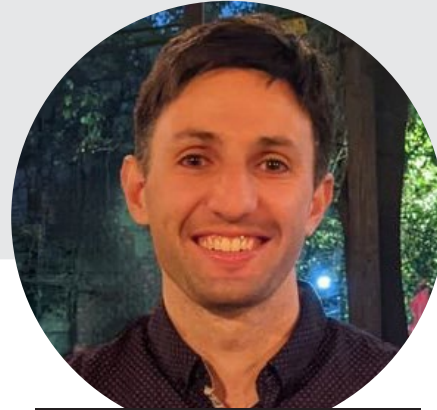


Elisa Puccioni
(OSGEO Oceania Chair)

New Zealand

Elisa Puccioni is a Senior GIS Analyst and database administrator for Kenex Ltd, a GIS service company based in Wellington. She moved to New Zealand from Italy in 2008 and has been living in Wellington since. She has been working in the geospatial sector for almost 20 years, applying advanced GIS analysis and modeling techniques to many different projects in several industry sectors. She firmly believes GIS should be for everybody and that's why she got involved in the OSGeo Oceania community, serving two years as board member and currently being in charge of the Grant programme and Travelling Grant programme for the conference. In her spare time she loves reading, cooking, traveling and practicing pole dance.

[Kenex >](#)



Ed Neerhut
(OSGEO Oceania)

Australia

Edoardo is a Program Manager at Meta leading community initiatives for their mapping team. In doing so he works with Mapillary for street-level imagery collection, Rapid for AI-assisted map editing, Daylight for reliable OpenStreetMap use and analysis, and more recently Overture, a multi-company collaboration to create open map data.

He was a founding director of OSGeo Oceania, former chair, and has been regularly involved on the board. He enjoys contributing to OpenStreetMap under the username eneerhut and lately maps pedestrian infrastructure.

[Meta XR Perception Maps, Reality Labs >](#)



Greg Lauer
(OSGEO Oceania)

Australia

Greg Lauer is a Geographer and Open Data advocate, originally from New Zealand and now residing in Brisbane, Australia. His day job is helping people manage extremely large point cloud datasets with Pointerra. He is a founding director of OSGeo Oceania, and has been regularly involved both on the board and conference organizing committees. He is a frequent contributor to OpenStreetMap and Mapillary and is a frequent traveller to the Pacific, most recently in Kiribati and Nauru. When not on a plane Greg can be found on an adventure motorcycle or 4WD somewhere by a mountain or ocean.

[Pointerra >](#)



LOCAL ORGANISING COMMITTEE



Hamish Campbell

New Zealand

Hamish Campbell is a software engineering manager at Koordinates.com and OSGeo Oceania chartered member. He's been a committee member for two successful FOSS4G Hubs in Auckland. He believes that open source tools are the foundation to a healthy GIS industry. This foundation is necessary for meeting the challenges that the world faces today. He also likes to travel, go camping and play board games. Hamish was the Chair for FOSS4G SoTM Oceania 2023 held in Auckland.

[Koordinates >](#)



Emma Hain

Australia

Em Hain has been working in the GIS world since 2000 in infrastructure and environmental management. In 2016 she started to work with QGIS and has never looked back. Em works as a Product Manager and Senior GIS Specialist at North Road Consulting, an Australian based spatial development consultancy which predominantly utilized international co-funding and crowd-funding campaigns to finance development into open source GIS applications. She has been involved in the FOSS4G Community since 2016 after the inaugural FOSS4G SoTM Oceania, having sat on the OSGeo Oceania Board and as the Conference Program Chair for the last 2 years. Additionally, she is also involved in the QGIS AU community.

[North Road >](#)



Lanieta Rokotuiwakaya

Fiji

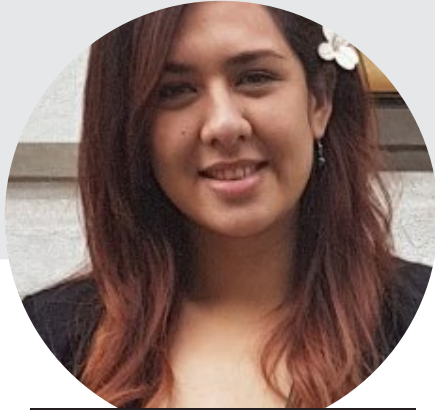
Lani has over eight years experience in geospatial and data management, she delivers high-quality solutions for organizations and initiatives that align with her vision of environmental sustainability and climate change adaptation.

Lani has a postgraduate diploma in Islands and Ocean Stewardship (in progress) and a bachelor's degree in Geography and Marine Affairs, which provide her with a solid foundation of knowledge and skills in her field of expertise.

[GHD >](#)



LOCAL ORGANISING COMMITTEE



Carrol Chan

Fiji

Carrol is a third-year PhD Scholar under the Pacific Node Network, on industry scholarship with University of Newcastle and SPREP. Her research is focused on the use of geospatial tools for assessing impacts of climate change, particularly increased intensity of cyclone events on invasive weeds in the Pacific.

Carrol is passionate about building an open geospatial community in the Pacific. She has previously been a board member of OSGeo Oceania (2020-2022) and currently the OSMFiji Community Project Lead.



Dawn Hendrick

Australia

After studying Geology and Mineral Exploration in the UK Dawn worked in the seismic exploration industry before emigrating to Toowoomba in Queensland, Australia in 1985. In 2000 she studied externally through Charles Sturt University for a Graduate Diploma in GIS and Remote Sensing. Since then she has worked for Local and State Government and a number of private companies. In 2010 Dawn moved to Tasmania in the very south of Australia as part of a "Treechange". She has recently retired from Teaching Spatial Sciences at TAFE NSW. She loves bushwalking, cycling and traveling overseas.



Timothee Duhamel

New Zealand

Tim Duhamel is a Senior GIS Software Engineer at Auckland Transport, a local government organization in New Zealand.

Coming from a web development background, he was introduced to GIS while developing an app using FOSS tools Leaflet and QGIS.

He has since become an active contributor to OpenStreetMap, keeping it up to date wherever he goes.

[Auckland Transport >](#)



LOCAL ORGANISING COMMITTEE



Pierre Kruth

Australia

Having spent over 15 years in the print publishing, digital mapping and geospatial industry, Pierre has gained a wealth of experience in delivering innovative mapping and geo-spatial solutions.

As a cartographer and GIS enthusiast he is equipped with a variety of different skills from data capture, streamlined data manipulation and data validation to data visualization for print and digital map production.

[NGIS >](#)



Steven Haslemore

New Zealand

Steven Hasslemore is a Geospatial Lead at Woods in Auckland where he's been delivering heavily FOSS4G based solutions for the last 4 years. A member of OSGeo Oceania since Wellington 2019 he's been involved in delivering the last two Auckland hubs.

He appreciates introducing users to the FOSS4G tools and advocating for the cake they can bring to organisations.

[Woods >](#)



Oliver Holmes

Australia

Oliver has worked in several different industries including online training, 3d animation, geospatial/remote sensing and he has also worked for an ISP.

In addition he has been involved in marketing, customer engagement, and presenting solutions for business challenges on a national and international stage.

[CSIRO >](#)



Local open source development and implementation activity

Our Oceania region includes the countries listed in the United Nations Geoscheme for Oceania as well as informal connections with the Philippines, Indonesia, and Timor-Leste. We recognise the important cultural and social connections with countries in the broader region, so our community activities and events often include them.

There are over 230 registered OSGeo Oceania members who contribute to the Oceania open geospatial community in many meaningful ways including contributing to software development, education, OpenStreetMap, committees, events, volunteering and participating in email list discussions.

Managing/organising work and relations with OSGeo

We will invite OSGeo to designate a representative that will be part of our LOC to streamline communication between ALOC and OSGeo Board. In addition, as we have current OSGeo Oceania board members on the ALOC, they will also be available to OSGeo for updates.

Based on our past successful conference organisation we intend to use the following:

- Dedicated Slack channel(s) for Conference organisation, e.g.
 - Organisers
 - Program
 - Website
- Dedicated Google Drive shared folders.
- Weekly remote ALOC meetings via Google Meet meetings.
- Once various tasks are assigned to ALOC members there will be additional remote meetings as required.

OSGeo Oceania Membership breakdown:

Country	Members	Member %
American Samoa	1	0.40%
Australia	111	48.30%
Federated States of Micronesia	1	0.40%
Fiji	28	12.20%
France	1	0.40%
Hong Kong	1	0.40%
Marshall Islands	1	0.40%
New Caledonia	2	0.90%
New Zealand	53	23.00%
Northern Mariana Islands	2	0.90%
Pakistan	1	0.40%
Papua New Guinea	5	2.20%
Philippines	1	0.40%
Samoa	3	1.30%
Solomon Islands	3	1.30%
Sri Lanka	1	0.40%
Tanzania	2	0.90%
Timor Leste	1	0.40%
Tonga	2	0.90%
Turkey	1	0.40%
Tuvalu	1	0.40%
United Kingdom	3	1.30%
United States of America	3	1.30%
Vanuatu	2	0.90%
Total	230	



COVID-19 considerations

COVID-19 considerations – backup plan

OSGeo Oceania brings a wealth of experience to organising conferences, having successfully delivered physical, hybrid, and virtual events.

We understand that virtual conferences can limit face-to-face interaction. However, we've consistently maintained high audience engagement through innovative approaches. Virtual events also offer a wider reach and the flexibility to experiment with new formats for interaction.

For virtual and hybrid events, OSGeo Oceania excels in:

- **Content curation:** We carefully select content that translates well to the digital format, ensuring a captivating online experience.
- **Seamless communication:** We prioritize clear and consistent communication throughout the event to avoid any disruptions.
- **Platform Adoption:** Adapting to using user-friendly digital platforms to host events such as Venueless, including features like virtual exhibitions.

While we believe in-person interaction is valuable and preferable, we can effectively adapt to different formats.

For hybrid events with limited physical attendees, our AUT City Campus venue's multiple rooms are ideal. We'll seamlessly integrate technology like cameras and projectors to create a connected experience for both physical and online participants. This ensures everyone can participate and engage, regardless of location.

Decision regarding the type of event should be publicly announced (physical/virtual/hybrid).

The decision to modify the event into a virtual or hybrid format should be made a minimum of 6 months before.

Financial and organisational impact of going with a virtual/hybrid event instead a traditional one

Choosing between a traditional, in-person conference and a virtual or hybrid format has significant financial and organisational implications.

Here's a breakdown of the key factors that would be considered:

Financial Impact:

- Costs:
 - **Traditional:** Venue rental, catering, travel and accommodation for speakers and staff, audio/visual equipment rentals.
 - **Virtual/Hybrid:** Platform fees, live streaming services, potential venue costs for a smaller physical component, potentially lower speaker travel costs (hybrid).
- Savings:
 - **Virtual/Hybrid:** Reduced venue costs, elimination of catering costs for most attendees (virtual) or a smaller group (hybrid), potential savings on speaker travel and accommodation (hybrid).
- Revenue:
 - **Traditional:** Ticket sales, sponsorships, exhibitor fees.
 - **Virtual/Hybrid:** Potentially lower ticket sales due to lack of travel costs for attendees (virtual), potentially larger audience reach (virtual), sponsorship opportunities may need adaptation for the virtual platform, exhibitor booths may translate to virtual exhibition halls.

Organisational Impact:

- Logistics:
 - **Traditional:** Venue selection, travel arrangements for speakers and staff, catering coordination, audio/visual setup.
 - **Virtual/Hybrid:** Platform selection and management, pre-recording of presentations (optional), live stream coordination (hybrid), potentially managing two sets of logistics (physical and virtual components – hybrid).
- Marketing and Promotion:
 - **Traditional:** Focus on local and regional marketing, promoting travel and accommodation options.
 - **Virtual/Hybrid:** Greater emphasis on digital marketing strategies, promoting the online platform and its features.
- Engagement:
 - **Traditional:** Networking opportunities built into the event schedule.
 - **Virtual/Hybrid:** Creative approaches needed to foster engagement online, potentially incorporating interactive features in the virtual platform (hybrid).

Overall:

Virtual and hybrid conferences can offer significant cost savings, particularly on venue rental, catering, and travel. However, platform fees and the need for specialised skills in managing the virtual environment must be factored in. On the organisational side, virtual events require a strong focus on digital marketing and effective online engagement strategies.

The best choice depends on the specific goals, budget, and target audience. If a global reach and cost-efficiency are priorities, a virtual or hybrid format is ideal. However, if fostering deeper connections and replicating the energy of face-to-face interaction is crucial, a traditional conference is preferable.



THE BUDGET

Attendance and Sponsorship

Expected attendance

The following table details the expected attendance levels we could achieve:

Region	Base	Better	Best
Oceania	330	390	450
Asia	55	65	75
Africa	10	13	14
Europe	69	81	94
Middle East	6	7	8
North America	69	81	94
South America	11	13	15
Total	550	650	750

Expected Oceania region attendance breakdown (based on 2019 and 2023 FOSS4G Oceania events held in NZ)

Australia	36%
Fiji	3%
New Zealand	57%
Papua New Guinea	2%
Rest of Oceania	2%

Expected sponsorship

Sponsorship is expected to be in the range \$100,000 to \$160,000 NZD (approx. \$60,000 to \$96,000 USD), contributed from a mix of local Oceania and international sponsors. A detailed sponsorship budget is available on request.

Sponsorship Levels

Our anticipated sponsorship levels are as follows:

Level	\$NZD	\$USD
Advertisement splash at start and end of each recorded conference video	\$7,500.00	\$4,500.00
Advertisement Lanyards	\$3,000.00	\$1,800.00
Conference Level 1 Platinum 5x Conference Registrations 5x Gala Dinner Tickets 2x Exhibition Stands 1x 25 min speaking slot	\$20,000.00	\$12,000.00
Conference Level 2 Gold 3x Conference Registrations 3x Gala Dinner Tickets 1x Exhibition Stands	\$10,000.00	\$6,000.00
Conference Level 3 Silver 2x Conference Registrations 2x Gala Dinner Tickets 1x Exhibition Stands	\$5,000.00	\$3,000.00
Conference Level 4 Bronze 1x Conference Registrations 1x Gala Dinner Tickets 1x Exhibition Tabletop Display	\$2,500.00	\$1,500.00
Event Gala Dinner	\$10,000.00	\$6,000.00
Event Gala Dinner MC	\$2,000.00	\$1,200.00
Event Gala Dinner Speaker	\$10,000.00	\$6,000.00
Event Icebreaker	\$3,000.00	\$1,800.00
Event Travel Grant Program Breakfast	\$2,500.00	\$1,500.00
Event Women in Spatial Breakfast	\$2,500.00	\$1,500.00
Childcare Programme	\$6,000.00	\$3,600.00



THE BUDGET

Delegate Fees

Delegate fees for the conference, workshop and social activities

We have aimed to keep the cost per participant around \$1,000 \$NZD (\$600 USD) for a typical early bird conference package comprised of:

- 1x Conference registration
- 4x workshops
- 1x Gala Dinner ticket

Type	Details	\$NZD	\$USD
Conference Registration Standard	Standard registration	\$950	\$569
Conference Registration Early Bird	Early Bird registration	\$700	\$419
Conference Registration Late	From 1st November 2025	\$1,500	\$898
Workshops	Per workshop	\$50	\$35
Gala Dinner and Museum Experience	Dinner and 2 ticketed drinks included, PYO thereafter Private access to Māori and Pacific Galleries	\$150	\$89
Icebreaker	Entry included in Conference Registration 2 ticketed drinks included, PYO thereafter	\$-	\$-
Women in Geospatial Breakfast	Plated Breakfast, All Black Experience Tour, All Blacks motivational speaker	\$49	\$29
T-Shirt		\$40	\$24
Good Mojo Donation	FOSS4G SotM is a community run conference by OSGeo Oceania. As a not-for-profit organisation, any additional donations to our Good Mojo fund will go toward supporting community events, travel grant programmes and future conferences.		





Grants and subsidised rates

Travel Grant Programme

Following the success of our regional Travel Grant Program (TGP) in 2018, 2019, 2022 and 2023 OSGeo Oceania is offering a TGP for the FOSS4G Auckland 2025 Conference, aimed at enabling attendance for people who are disadvantaged by economic circumstances and/or geography.

Oceania is a vast region, with a highly distributed population, a large proportion of which is in small, lesser-developed countries. Travelling to New Zealand and attending a conference there for five days could be difficult and expensive, even for local indigenous communities of the country, and visas are also costly.

There is a strong need in this region for this type of program, and there are clear economic and social benefits of spreading open geospatial knowledge to those who stand to gain the most. The TGP’s goal is increasing the diversity, accessibility, and reach of the conference. We want to support worthy recipients who are interested in gaining in-depth insight into development and application of open-source geospatial software and are committed to making an impact in their home country, given the opportunity provided.

Travel Grant Programme Tiers	Conference Costs	Assistance Costs	Value \$NZD	Number Offered	Total \$NZD
Tier 1 Platinum (Global)	\$995	\$1,500	\$2,495	5	\$12,475
Tier 2 Gold (Oceania)	\$995	\$1,000	\$1,995	10	\$19,950
Tier 3 Silver (Local)	\$995	\$265	\$1,260	10	\$12,600
Tier 4 Bronze	\$995	\$0	\$995	10	\$9,950
				35	\$54,975

Funded By	\$NZD
OSGeo	\$20,000
OSGeo Oceania	\$20,000
Sponsors/Good Mojo Donations	\$15,000
	\$55,000

Student Registration

Student discounts are crucial for conferences as they allow for increased accessibility and cultivate the next generation of attendees. Lower costs open doors for students who might otherwise be unable to attend, fostering a more inclusive and diverse audience. This early engagement exposes students to the field, sparking potential lifelong careers and valuable contributions to the community. By investing in students, conferences are essentially investing in the future of their field.

For FOSS4G Auckland 2025 we are pleased to be able to offer a significantly discounted conference registration and we aim to include them directly in conference organisation as volunteers.

Type	Details	\$NZD	\$USD
Conference Registration Student	For secondary and tertiary students at valid educational institutions. Must be available to volunteer for min 2 days	\$200	\$120

Conference Costs include

- 1x Conference Registration
- 4x Workshops
- 1x Gala Dinner Registration

Assistance Costs may include

- Transportation
- Accommodation
- NZ Visa costs



Surplus forecast



Summary	Base	Better	Best
Total Attendance	550	650	750
Anticipated attendance from Oceania region	170	200	250
Climate Change / Carbon Offset initiative of donated trees	550 Trees	650 Trees	750 Trees
Paid Attendance	495	585	675
Attendance from outside Oceania	380	450	500
Complimentary Attendance	55	65	75
Student Attendance	17	20	23
Late Registration Attendance	28	33	38
Gala Dinner Attendance	347	410	473

Summary	Base		Better		Best	
	\$NZD	\$USD	\$NZD	\$USD	\$NZD	\$USD
Total Revenue	\$658,128	\$389,425	\$749,073	\$443,238	\$840,018	\$497,052
Total Expenses	\$539,848	\$319,437	\$598,904	\$354,381	\$657,959	\$389,325
Surplus	\$118,280	\$69,688	\$150,169	\$88,857	\$182,058	\$107,727
Surplus per Attendee	\$215	\$127	\$231	\$137	\$243	\$144
Surplus back to OSGeo	\$59,140	\$34,994	\$75,084	\$44,429	\$91,029	\$53,863
Surplus back to OSGeo Oceania	\$59,140	\$34,994	\$75,084	\$44,429	\$91,029	\$53,863

Estimate of any seed funding and/or guarantee required

Our cash flow analysis indicates we will be requiring a small seed fund amount of up to \$25,000 NZD, which we will be looking to OSGeo Oceania to assist.

Solutions to avoid financial losses in case of unforeseen situations

Securing Event Cancellation and Liability insurance for FOSS4G Auckland 2025 will offer valuable protection for both the conference and attendees.

- In case of unforeseen circumstances like natural disasters or travel disruptions, the cancellation insurance will provide financial reimbursement, safeguarding the conference budget.
- Liability insurance will protect the organisers from financial repercussions if an attendee gets injured or property is damaged during the event.
- This peace of mind will allow the FOSS4G Local Organizing Committee to focus on delivering a successful conference without worrying about unexpected financial burdens.



CONFERENCE PROGRAM

The Program

The FOSS4G Auckland 2025 program will offer a dynamic mix of learning opportunities designed to engage attendees at all levels. Interactive workshops will provide hands-on experience with key concepts and tools. Thought-provoking keynote addresses will set the stage for the main conference sessions. Lightning talks will offer a taste of diverse perspectives on emerging topics. This comprehensive program will ensure attendees will gain valuable insights, develop practical skills, and leave inspired to push boundaries in their work.

	Monday 17/11/2025	Tuesday 18/11/2025	Wednesday 19/11/2025	Thursday 20/11/2025	Friday 21/11/2025	Saturday 22/11/2025	
07:00							
07:30			Breakfast Events	Breakfast Events			
08:00	Registration	Registration					
08:30			Registration	Registration			
09:00	Morning Workshops	Morning Workshops	Opening	Day 1 Summary	Day 2 Summary	Codesprint Community Day	
09:30			Keynote 1	Keynote 2	Keynote 3		
10:00			Break	Break	Break		
10:30	Break	Break					
11:00			Sessions	Sessions	Sessions		
11:30	Morning Workshops	Morning Workshops					
12:00							
12:30	Lunch	Lunch	Lunch	Lunch	Lunch	Lunch	
13:00							
13:30	Afternoon Workshops	Afternoon Workshops	Sessions	Sessions	Sessions	Codesprint Community Day	
14:00					Lightning Talk		
14:30							
15:00	Break	Break	Break	Break			
15:30							
16:00	Afternoon Workshops	Afternoon Workshops	Sessions	Sessions	Closing		
16:30					OSGeo AGM		
17:00							
17:30							
18:00	Evening Social Events	Evening Social Events	B2B	Ice Breaker	Gala Dinner	Evening Social Events	Evening Social Events



The Program

Workshops

Workshops at FOSS4G Auckland 2025 will be immersive learning labs. They offer a valuable departure from traditional presentations by providing attendees with a hands-on experience. Through interactive exercises, practical demonstrations, and guided projects, workshops equip participants with the skills and knowledge to apply what they've learned immediately. This active learning environment fosters deeper understanding, builds confidence in using new tools, and allows attendees to tackle real-world challenges alongside experienced instructors and peers. Workshops are essential for solidifying knowledge gained during presentations and propelling attendees to put theory into practice.

For FOSS4G Auckland 2025 workshops will be 3.5 hours duration and held in either a morning session or afternoon session on the first two days of the conference.

Our venue at AUT offers multiple modern classroom spaces fully equipped for running workshops allowing us flexibility in the number of workshops offered. Initially we have allowed for 4 sessions of 4 workshops (16 Workshops over two days), but this can easily be expanded to accommodate all workshop sessions submitted.

Main Conference Sessions

FOSS4G Auckland 2025 sessions will include Keynote addresses, General presentations and Lightning talks.

- Keynote addresses set the tone and spark inspiration with thought-provoking insights from leading figures in the field. They paint a broad picture of key trends and challenges, igniting curiosity and setting the stage for deeper dives.
- General presentations, on the other hand, delve into specific topics, offering attendees a chance to gain in-depth knowledge and practical takeaways from a 25 minute presentation.
- Lightning talks are bite-sized bursts of brilliance at conferences. These short, energetic presentations, lasting just 5 minutes, will allow a wider range of speakers to share their ideas. Presenters focus on a single, compelling concept, captivating the audience with a focused delivery and clear visuals. Lightning talks are a great way to learn about new trends, discover diverse perspectives, and get a taste of a variety of topics all within a short timeframe. They leave attendees energized and eager to delve deeper into subjects that pique their interest.

Together, these presentations create a dynamic learning environment, fostering a comprehensive understanding of the field and equipping attendees with the tools and knowledge to advance their work.

Session Tracks

Session tracks are the backbone of FOSS4G Auckland 2025. They will act as a roadmap for attendees, allowing them to navigate the vast amount of information presented. By grouping sessions by theme or topic, attendees can tailor their conference experience to their specific interests and delve deeper into areas relevant to their work. This focused approach maximises learning and ensures attendees get the most out of FOSS4G Auckland 2025 by attending sessions that directly address their needs and goals.

Session Tracks will include:

- State of Software
- Academic Track
- Open Data
- Artificial Intelligence and Machine Learning
- Earth observation
- Transition to FOSS4G
- Use Cases and Applications
- Community and Foundation
- Open Standards

A Special Track will also be offered to showcase Oceania initiatives and projects:

- Geospatial Oceania

Codesprint Community Day

Our Codesprint and Community day will inject a thrilling dose of innovation and collaboration to FOSS4G Auckland 2025. These intense sessions bring together developers from various backgrounds to work on specific coding challenges related to the geospatial applications and solutions. The codesprint fosters a dynamic environment where participants can learn from each other, test their skills, and rapidly develop creative solutions. It's an opportunity to push boundaries, experiment with new technologies, and potentially spark groundbreaking projects that contribute to the advancement of the field. This fast-paced, collaborative environment fosters a sense of camaraderie and ignites a passion for innovation within the developer community.

The day will include the following sessions:

- Codesprints on multiple projects of interest to the FOSS4G community
- Regional QGIS User event
- HOT Open Mapping Hub (Asia Pacific) event



Dates and Events

Conference Dates

Monday, November 17th to Saturday, November 22nd, 2025.

These dates coincide with the end of the academic year and start of the summer holidays so classes at AUT have finished enabling more room options to be available. There is also the possibility of student accommodation being available during this timeframe.

Local/regional/international conferences viewed as competition or collaboration.

Related events

- [URISA GIS-Pro](#) is usually held in October in North America.
- [New Zealand Esri User Conference](#) is usually held in September in New Zealand.
- [GeoCart](#) in August in New Zealand.
- [NZ Spatial & Surveying](#) is usually in August in New Zealand.
- [Locate conference](#) is usually in ~April/ May in Australia
- [FIG Working Week 2025](#) being held from 6-10 April 2025 in Australia

Collaboration

- [Pacific GIS and RS](#) is usually held in the last week of November or first week of December in Suva, Fiji.

Social Events

FOSS4G Auckland 2025 Social events will be more than just pre/post-session fun; they will be crucial for fostering connections and building a vibrant community. These events provide a relaxed atmosphere where attendees can connect with colleagues (old and new) outside the confines of formal presentations. Sharing experiences, exchanging ideas, and building rapport over casual conversations strengthens professional networks and ignites potential collaborations. Social events will not only enhance the enjoyment of FOSS4G Auckland 2025 but will also contribute to its overall success by fostering a sense of belonging and camaraderie that extends beyond the event itself.

Social events will be split into Breakfast and Evening events as follows:

- Breakfast Social Events
 - Women in Geospatial Breakfast
 - TGP Breakfast
- Evening Social Events
 - Ice Breaker evening event
 - Gala Dinner evening event
 - GeoChicas (pending agreement)
 - Auckland nightlife experiences!

Breakfast Events will be sponsored events.

The Gala Dinner evening event will be an optional ticketed item as part of delegate registration and will not be included in the conference registration fee.



Women in Geospatial Breakfast – All Blacks Experience

The All Blacks Black Ferns are New Zealand's premier women's rugby team and the most dominant team in all of rugby with Rugby World Cup titles in 1998, 2002 2006, 2010 and 2017 and 2021 (played in 2022). They have one of the best winning percentages in international rugby, with victory in over 85 percent of their Tests.

The Women in Geospatial Breakfast event will fuel attendees' ambition with a powerful breakfast at the heart of All Blacks history! Join us at the All Blacks Experience for an empowering morning dedicated to women. Network with inspiring leaders, share strategies for success, and be ignited by the legacy of resilience and teamwork embodied by the All Blacks. This unique event offers a dynamic platform for women to connect, collaborate, and pave the way for a brighter future.

CAPACITY	
BANQUET	120



[Visit Website](#)



SOCIAL EVENT SPACES



Icebreaker Event – The Maritime Room

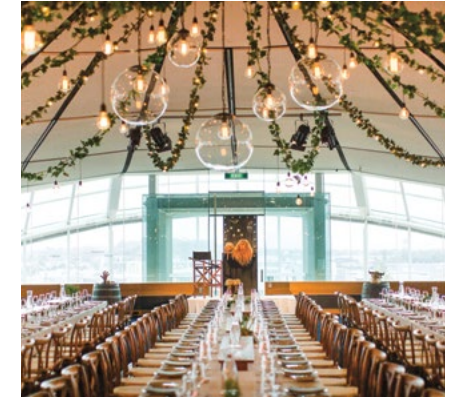
Nestled in the heart of the CBD, within the historic National Maritime Museum precinct, The Maritime Room is a modern and contemporary venue, presenting a multitude of options for a cocktail function or Gala dinner.

Attendees will mingle and make connections against a stunning harbour backdrop at The Maritime Room's icebreaker cocktail event. Nestled on Auckland's vibrant waterfront, The Maritime Room promises breathtaking harbor views as you sip on refreshing drinks and engage in lively conversation with fellow attendees. The relaxed atmosphere provides the perfect opportunity to break the ice, forge new relationships, and set the stage for a productive and enjoyable conference experience.

CAPACITY	
COCKTAIL	400



[Visit Website](#)



Gala Dinner Event – Auckland War Memorial Museum Tāmaki Paenga Hira

With its striking neo-classical architecture and commanding hill-top position, the iconic heritage-listed Museum is one of Auckland's premier event locations.

Attendees will immerse themselves in rich cultures at the Auckland War Memorial Museum. We will explore the Māori Court, marvelling at intricate carvings and taonga (treasures), and gain a deeper understanding of Māori history and traditions. Then, we journey to the Pacific Hall, where captivating displays showcase the artistic heritage and vibrant stories of island nations across Oceania. As the sun sets, we will ascend to the grand foyer for a dazzling gala dinner under the museum's iconic copper dome. Savour exquisite cuisine and lively conversation amidst the architectural splendor, making for an unforgettable culmination to a unique cultural exploration.

CAPACITY	
BANQUET	450



[Visit Website](#)



OTHER RELEVANT DETAILS

Other relevant details

Professional Conference Organizing Service

We will be using PCO for...

- Logistics for event registration and ticketing
- NZD transactions and accounting
- Call for papers, workshops and the scheduling of the program
- Sponsorship administration

Logo Competition

We intend to run a logo competition with the winner receiving 1x conference registration, 1x complimentary gala dinner ticket and 4x complimentary workshop registrations.

The logo competition will be run along the same lines as this year's Oceania FOSS4G conference in Hobart, [details here](#).

Associated Events

Discussions are underway to include the following associated events as part of the codesprint community day:

- Regional QGIS User event
- HOT Open Mapping Hub (Asia Pacific) event

Climate Change / Carbon Offset Initiative

For every conference registration we will donate a native tree to the Trees for Survival Programme.

Trees for Survival is a hands-on school based programme that empowers students to raise and plant native seedlings, teaching them how small actions can make a big difference against climate change.

Every native plant is given to a local New Zealand school to grow, nurture and plant through the Trees for Survival environmental education programme.

<https://www.tfsnz.org.nz/>

The Trees for Survival programme offers a multi-pronged approach to environmental restoration and a healthier planet. Here's how it benefits you and the environment:

- **Combat Climate Change:** Trees absorb harmful carbon dioxide, a key greenhouse gas, mitigating climate change impacts.
- **Protect Biodiversity:** Planting trees creates essential habitats for wildlife, promoting biodiversity and a thriving ecosystem.
- **Prevent Soil Erosion:** Healthy tree cover prevents soil erosion, protecting land fertility and valuable resources.
- **Cleanse Air and Water:** Trees act as natural filters, improving air and water quality for a healthier environment.
- **Empower Communities:** The program involves local communities and especially school students in tree planting and care, fostering environmental stewardship.

This initiative offers FOSS4G Auckland 2025 attendees the chance to make a real difference for the planet, ourselves, and future generations.



Other relevant details

Diversity, Equity and Inclusion in New Zealand

New Zealand is a vibrant, multicultural nation, enriched by the perspectives, experiences, and traditions of its diverse population. We recognize that building a truly inclusive and equitable society requires a conscious and unwavering commitment to the values of diversity, equity, and inclusion (DEI).

- **Diversity:** We celebrate the rich tapestry of our people, acknowledging the unique contributions of different cultures, ethnicities, genders, sexual orientations, ages, abilities, religions, socio-economic backgrounds, and all other dimensions that shape individual identities.
- **Equity:** We understand that systemic and historical factors have created disparities and that true inclusion requires recognizing and addressing these barriers. We are committed to ensuring that everyone has fair opportunities to participate, thrive, and reach their full potential, regardless of their background.
- **Inclusion:** We strive to create a society and a workplace where everyone feels valued, respected, and has a sense of belonging. We foster an environment where diverse voices are heard, represented, and integrated into decision-making processes.

New Zealand: A Global Leader in Women's Suffrage

New Zealand holds a significant place in history as the first self-governing country in the world to grant women the right to vote in national parliamentary elections. On September 19, 1893, with the signing of the Electoral Act,

New Zealand paved the way for a more equitable society where women's voices were heard and their participation in the democratic process was secured.

This landmark achievement was the culmination of years of tireless campaigning by dedicated suffragists. Their unwavering belief in equality and their persistent efforts shattered social norms and redefined the political landscape.

New Zealand's pioneering role in women's suffrage continues to inspire movements for gender equality around the globe. It serves as a powerful reminder of the transformative power of collective action and the importance of advocating for a more inclusive democracy.

Venue Sustainability

Our venue partner AUT embraces sustainability through the operation of its campus facilities. Projects that provide sustainability benefits at AUT include:

- Biodiversity
- Energy
- Procurement
- Sustainable Buildings
- Transport
- Water
- Waste

More details are available at:

- [Facilities & Operations – Sustainability – AUT](#)
- [Sustainability Report – AUT](#)





OTHER RELEVANT DETAILS

Other relevant details

2006	2007	2008	2009	2010	2011	2012	2013	2014	2015	2016	2017	2018	2019	2020	2021	2022	2023	2024	2025	2026
Europe Switzerland Lausanne 566	North America Canada Victoria 722	Africa South Africa Cape Town 531	Oceania Australia Sydney 436	Europe Spain Barcelona 870	North America USA Denver 886	Asia China Beijing e	Europe UK Nottingham 797	North America USA Portland 858	Asia South Korea Seoul 562	Europe Germany Bonn 950	North America USA Boston 1162	Africa Tanzania Dar Es Salaam 1135	Europe Romania Bucharest 1069	Cancelled	South America Argentina Buenos Aires 1899	Europe Italy Firenze 1303	Europe Kosovo Prizren 700	South America Brazil Belem tbd		
				1	2	3	4	5	6	7	8	9	10	11	12	13	14	15	16	17
Lausanne	Victoria Portland	Cape Town Brasil Bangkok Seville	Sydney	Barcelona Beijing Denver Utrecht	Denver Bogota	Beijing Prague Hanoi Rome	Nottingham Prague Helsinki	Portland Sao Paulo Washington	Seoul	Bonn Dublin	Boston Ottawa Philadelphia	Dar Es Salaam Bangkok Lima	Bucharest Sevilla	Calgary Halifax Niagara	Buenos Aires Istanbul	Firenze	Prizren	Belem	?	?

Oceania and the FOSS4G Conference

Since 2018, OSGeo Oceania and FOSS4G have seen a resurgence in popularity within the Oceania region. This is likely due to a confluence of factors, including:

- **Increased awareness:** Growing recognition of the benefits of open-source geospatial tools has fuelled interest in FOSS4G conferences and the OSGeo Oceania community.
- **Cost-effectiveness:** FOSS4G solutions offer a budget-friendly alternative to proprietary software, making them attractive to organizations and individuals.
- **Technological advancements:** Advancements in FOSS4G software capabilities have made them more robust and user-friendly, attracting a wider audience.
- **Community building:** OSGeo Oceania outreach and regular regional FOSS4G conferences in Oceania have fostered collaboration and knowledge sharing, strengthening the regional geospatial community.

The only hosting of a global FOSS4G conference in the Oceania region was 15 years ago in Sydney, Australia being the FOSS4G 2009 Conference with 436 attendees.

We sincerely believe that Oceania is now once again in a position to host a Global FOSS4G Conference to showcase our Oceania region 16 years later to the global FOSS4G community.

FOSS4G Auckland 2025 is the perfect opportunity to do this.

Understanding Māori protocol & customs



Pōwhiri encounter

Pōwhiri

Pōwhiri or welcome ceremony provide a special opportunity for visitors to experience Māori traditions in action. A pōwhiri normally takes place on a marae, or Māori meeting grounds. The marae sits at the heart of Māori communities and is an important part of Māori culture.

The pōwhiri begins with an encounter

Traditionally a pōwhiri begins at the entrance to the marae (Māori meeting house), a person from the marae will challenge the guests before allowing them to enter inside. The history behind this is to assess whether these strangers are friends or enemies. They may carry a taiaha (spear-like weapon) and will lay down a token — often a small branch — for the visitors to pick up to show they come in peace.



Waiata

The call of welcome

An older woman from the host side will perform a karanga (call) to the manuhiri (visitors). This is the visitors' signal to start moving on to the marae grounds. A woman from among the visitors will respond with her own call. Visitors walk on to the marae as a group, slowly and silently with the women in front of the men. They will pause along the way to remember their ancestors who have passed on. A representative from the host side will join any international visitors to guide them through the process.

Speeches and waiata (songs)

Once on the marae grounds and either in front of or inside the main ancestral house, the visitors and hosts take their seats facing each other. Now speeches are made, usually by the older men of the two groups. A song is sung following each speaker to support his address. After the speeches, the visitors present a koha (gift) to their hosts.

MĀORI CULTURE THROUGHOUT EVENT



Greetings and food

To finalise formal proceedings, visitors and hosts greet each other with a hongi – the ceremonial touching of noses. After the pōwhiri, kai (food) will be shared, in keeping with the Māori tradition of manaakitanga or hospitality.

Kapa haka

Kapa haka – or traditional Māori performing arts – forms a powerful and highly visual part of the New Zealand cultural experience. Kapa haka is the term for Māori performing arts and literally means to form a line (kapa) and dance (haka). It involves an emotional and powerful combination of song, dance and chanting. Kapa haka is performed by cultural groups. During a kapa haka performance you'll experience a range of compositions, from chants and choral singing to graceful action songs and ferocious war dances. Many performances include skilled demonstrations of traditional weaponry.

Waiata-ā-ringa

In a waiata-ā-ringa or action songs, the lyrics are supported by symbolic hand movements. The performers flutter their hands quickly, a movement called wiri, which can symbolise shimmering waters, heat waves or even a breeze moving the leaves of a tree. Waiata-ā-ringa are usually accompanied by a guitar and can be slow, fast, serious, or fun and flirtatious, depending on the context.



Poi

Poi is a form of dance in which each performer skilfully twirls one or more poi (ball on a chord) in perfect unison with the others. Sudden direction changes are achieved by striking the ball on a hand or other part of the body, and the noise creates a percussive rhythm. Poi dancers are usually women and a skilled performance will strongly convey a sense of grace, beauty and charm.

Haka

Haka are war dances with loud chanting, strong hand movements, foot-stamping and thigh-slapping. Performers may incorporate traditional weapons, such as taiaha (spear-like weapons) and patu (clubs) into their haka. The All Blacks rugby team famously performs a haka before every game.

Pūkana

Pūkana or facial expressions are an important facet of Māori performance. They help emphasise a point in a song or haka and demonstrate the performer's ferocity or passion. For women, pūkana involves opening the eyes wide and jutting out their tattooed chin. For men, it means widening the eyes and stretching out their tongue or baring their teeth. Though these expressions may be intimidating, they are not necessarily a sign of aggression, but may simply show strong and deep-felt emotions.



City Highlights

TOP 10

Friendliest cities in the world

Conde Nast Traveler Reader Choice Awards 2021



21,000

AUCKLAND IS HOME TO 21,000 INNOVATION-BASED COMPANIES - 12% OF THE BUSINESS POPULATION



75%

AUCKLAND AIRPORT HANDLES MORE THAN 75 PER CENT OF ALL INTERNATIONAL ARRIVALS INTO NEW ZEALAND



4th

New Zealand is the 4th safest country in the world

Global Peace Index 2023

Accurate as at October 2022



EXPERIENCE AUCKLAND

Around the Region

With an irresistible combination of magnificent natural landscapes and a vibrant city lifestyle, Auckland is a place of exciting contrasts and endless adventures.



220+

DIFFERENT ETHNIC COMMUNITIES CALL AUCKLAND HOME

Statistics New Zealand (2013 Census, excludes unspecified data)

Te Ara I Whiti - The Pink Lightpath



EXPERIENCE AUCKLAND

Auckland is more than a city, it's a region of contrasts waiting to be explored.



NORTH SHORE AND HIBISCUS COAST

Head north and discover the ultimate laid-back lifestyle, where great food is always close at hand and the sea is your constant companion.



HAURAKI GULF AND ISLANDS

Discover tranquil islands lined with golden-sand beaches, walk up Auckland's youngest volcano, or go kayaking, sailing or dolphin spotting in the harbour.



WEST AUCKLAND

Journey into a region of natural wonders. Experience the rugged beauty of the west coast, its wild beaches and visit Auckland's oldest wine region.



CENTRAL CITY AND SURROUNDS

World-class shopping, buzzing waterfront precincts lined with restaurants, a vibrant arts and culture scene and harbour adventures right on your doorstep.



EAST AND SOUTH-EAST AUCKLAND

Sparkling blue waters, white-sand beaches, rolling countryside, boutique vineyards and the largest native forest in the Auckland region.



SOUTH AUCKLAND

Auckland's south is a melting pot of cultures from around the world, a place where history, adventure and beautiful landscapes combine.



THINGS TO DO

A World of Possibilities

With an abundance of diverse activities and adventures on Auckland's doorstep, there are experiences to excite every visitor.



40

Coastal and inland golf courses throughout the Auckland region



35 MINUTES

Waiheke Island is only 35 minutes by ferry from downtown Auckland

ARTS AND CULTURE

Immerse yourself in Māori and Pacific culture. See the collection of Māori taonga (treasures) or catch a traditional Māori cultural performance at Auckland War Memorial Museum. Visit Auckland Art Gallery Toi o Tāmaki, which houses more than 15,000 artworks, from the old masters to contemporary New Zealand artists. Take a walk through Voyager New Zealand Maritime Museum to learn about the Polynesian people's epic migration to New Zealand on traditional sailing waka (canoes) or go sailing in a waka yourself.

1.2 million

1.2 million hectares of sea, coast and islands make up Auckland's magnificent Hauraki Gulf Marine Park



Waka (canoe) and Te Wero Bridge, Wynyard Quarter, Auckland



THINGS TO DO



ISLAND ADVENTURES

Auckland's Hauraki Gulf Marine Park encompasses 1.2 million hectares of coast, sea and islands. Just 35 minutes on the ferry from downtown Auckland is Waiheke Island—a haven of beautiful vineyards, olive groves and beaches and a range of adrenaline pumping activities as well, or head to the volcanic island of Rangitoto where you can walk to the top or join a guided 4WD tour to the base of the summit and follow the boardwalk the last 900 m. You'll be rewarded with breathtaking 360-degree views back to the city, harbour and islands of the Hauraki Gulf.



GOLF

With more than 40 coastal and inland courses throughout the region, Auckland is an ideal spot for a round of golf. Whether you're after international quality resort courses or picturesque local gems, there's a perfect round for players of all abilities.



FROM MILD TO WILD

Auckland's extraordinary variety means there's an adventure to suit everyone. Bungy jump off Auckland Harbour Bridge, go canyoning down waterfalls or heli-fish from the remote shore of a Hauraki Gulf island. For something more mellow, hike along spectacular coastal paths, horse ride along white-sand beaches, or indulge in personalised shopping tours.



SHOPPING

Indulge in some top-notch retail therapy while you're in Auckland—from luxury international labels, cutting-edge New Zealand design and modern interiors, to vintage finds, high street fashion and quirky Kiwi art. Head to Britomart or High Street/Vulcan Lane for the flagship stores of New Zealand's most internationally successful designers, including Karen Walker, Zambesi, WORLD and Kate Sylvester, or hop on a CityLink bus from the city centre to explore one of Auckland's other top fashion precincts—Ponsonby Road, Parnell and Newmarket.



Our Commitment to Sustainability



In New Zealand, the environment has always been at the forefront of a thrilling visitor experience, with many choosing New Zealand precisely for its spectacular landscapes and unique wildlife.

Although created by nature, the environment has been preserved through the conservation efforts of its custodians. New Zealand has 14 national parks and more than 30 per cent of its land area is protected as conservation land of some description. In addition, its conservation workers are at the forefront of species management — bringing endangered wildlife back from the brink of extinction through innovative rescue programmes. But it's not only in the area of conservation that New Zealand demonstrates a commitment to sustainability.

With a population of 5 million people, and producing 0.2 per cent of the world's total greenhouse gas emissions, New Zealand was one of the first countries in the world to pledge a carbon-neutral future, and a number of companies have already achieved carbonZero certification. In addition, many accommodation providers and activity operators have gained Qualmark Enviro Awards, recognising efforts in areas of energy efficiency, waste management, water conservation, community activities and conservation initiatives.

The New Zealand Government's Ministry for Primary Industries (MPI) 2030 Strategy states their vision is that 'New Zealand will be the world's most sustainable provider of high-value food and primary products.' The strategy tells the story of what we need to achieve to ensure the success of the primary sector for the benefit of all New Zealanders.

New Zealand has agreed to map out a path to carbon neutrality by 2050 and Auckland Council has committed to membership of the C40 Cities Climate Leadership Group.

Auckland Transport's (AT) transition to zero-emission buses has been recognised in a C40 cities exhibition at the United Nations Climate Change Conference (COP 26), along with a number of wider Auckland Council initiatives to reduce carbon emissions.

The COP 26 summit improves the global efforts of countries all over the world to play their part in limiting global warming to 1.5 degrees.

The AT board adopted the Low Emission Bus Roadmap in 2018, which outlines the transition to a zero-emissions fleet by 2040. In December 2020 an accelerated roadmap targeting transition by 2030 was approved, and as a result AT will only procure low-emission buses, with no new diesel buses purchased. By the end of 2022, 71 zero-emissions buses will be introduced, including a hydrogen fuel cell trial.



Local initiatives



TREES THAT COUNT

Tourism New Zealand and Trees That Count have joined forces to make it easier for visitors to create canopies of carbon-sequestering native trees for future generations to enjoy and to support efforts to address climate change. The conservation charity has a vision to help plant 200 million trees across New Zealand.

Trees That Count can plant a native tree for each guest in Auckland’s Brookby Wildlife Habitat Project. This revegetation project links together remnant forest areas, increasing the area’s biodiversity and providing food for its abundant birdlife, particularly the endangered kākā bird.

OPEN SANCTUARY RESTORATION PROJECT

Auckland’s Shakespear Regional Park is an Open Sanctuary — a pest-free haven for native species that has sheltered bays, pastureland, regenerating native forest, and a lookout with breathtaking views. Join the volunteer programme to replant native forest in gullies and restore wildlife. Assist with pest eradication and restoration of wetlands and forest. Or work as farm hands or in the nursery planting and weeding.

HAURAKI GULF MARINE PARK RESTORATION PROJECT

Tikapapa Moana (The Hauraki Gulf) is of cultural and spiritual significance to Auckland, with a rich history of settlement and use since waka (canoes) first navigated its waters.

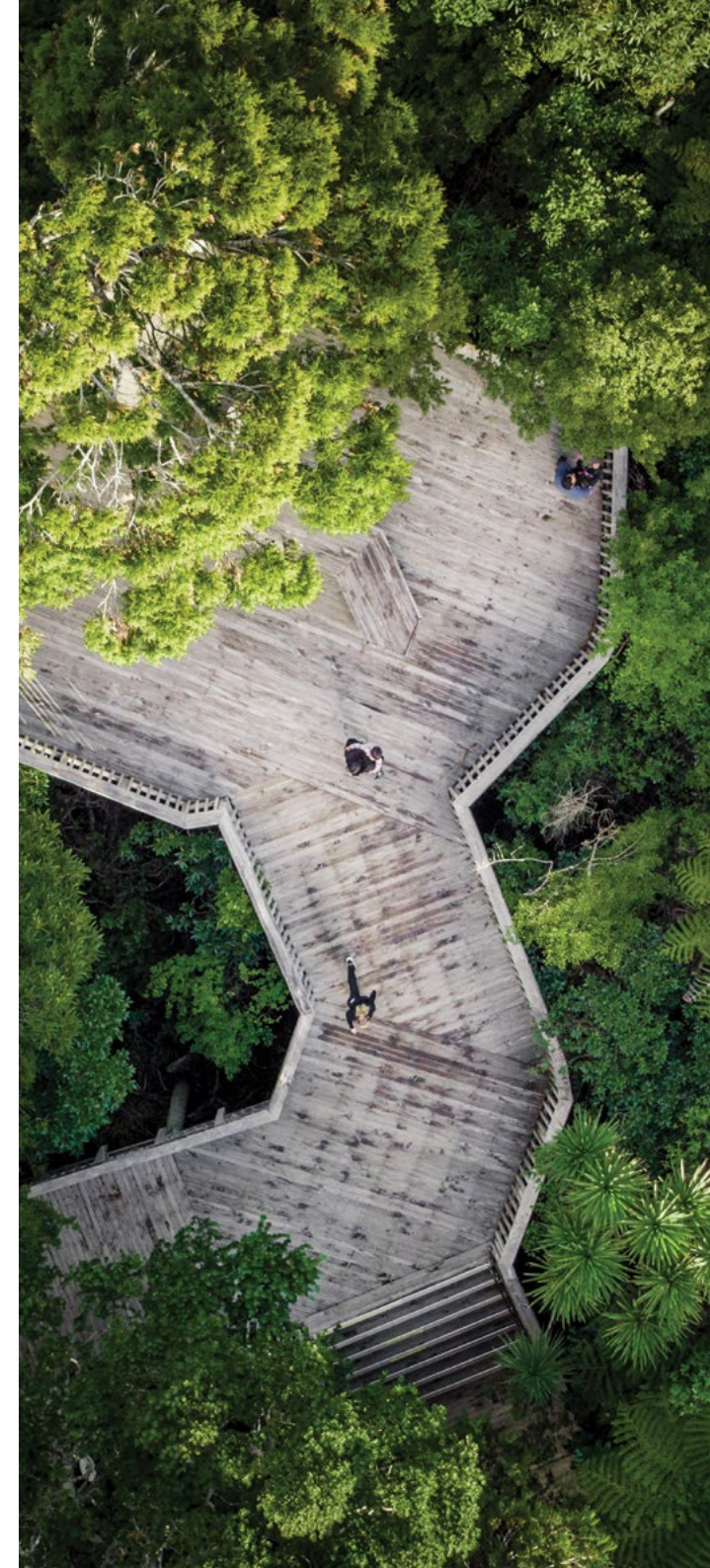
While the Marine Park is incredibly resilient, very little had been done to restore and rebuild its values, to ensure the national taonga (treasure) is there for future generations to enjoy. The Hauraki Gulf Marine Spatial Plan was developed to restore habitats, rebuild depleted fish stocks, remove marine debris and address risks and threats to water quality. Visitors can assist in the restoration of marine habitats such as shellfish beds and reefs and collect marine litter from beaches and coastal waters.

ARATAKI VISITOR CENTRE AND THE WAITAKERE RANGES

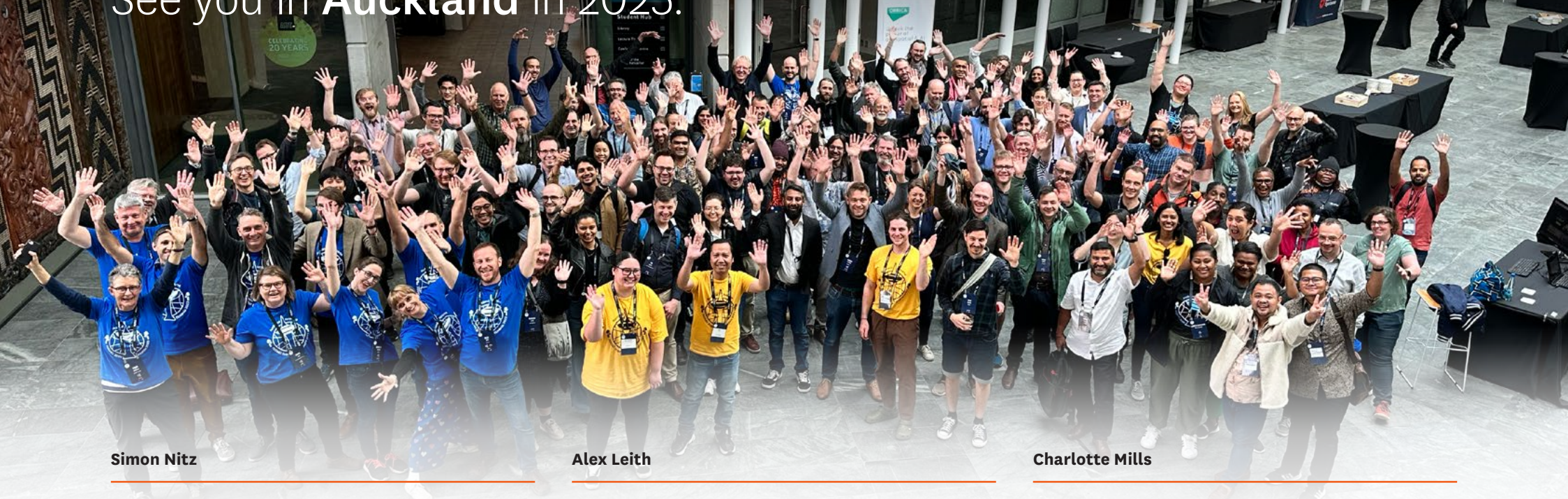
Over the past ten years, a pathogen called Phytophthora agathidicida has spread through New Zealand’s kauri forests. It causes a disease called kauri dieback, which is unique to kauri, currently incurable, and almost always fatal. Scientists, government agencies, iwi (Māori community) and volunteers throughout the country are developing measures to control and stop the disease. Guests can join a Friends of Arataki guided walk to learn about kauri dieback and the significant steps being taken to prevent spread and by Te Kawera a Maki (iwi of the Waitakere City land) to gain knowledge on plants in the ranges, their medicinal properties and edible values.

MILLION METRES

Million Metres is a waterways restoration project that focuses on planting native flora to care for New Zealand’s rivers, lakes and streams as well as the species that reside there. Their mission is to restore at least one million metres of waterways across the country. The Plants filter toxic runoff, prevent sediment washing into water, and cool the water by shading it, so aquatic creatures can survive. Guests can join planting days, they are social and active days out in the fresh air with some environmental education thrown in.



Ka kite koe i **Tāmaki Makaurau** hei te tau 2025.
See you in **Auckland** in 2025.



Simon Nitz

Co-Chair
Auckland Local Organising Committee

P +64 27 201 5131
E chair@foss4g-oceania.org

Alex Leith

Co-Chair
Auckland Local Organising Committee

P +61 419 189 050
E chair@foss4g-oceania.org

Charlotte Mills

Business Development Manager – Australia
Auckland Convention Bureau

P +64 27 344 652
E charlotte.mills@aucklandnz.com



aucklandnz.com/meet